



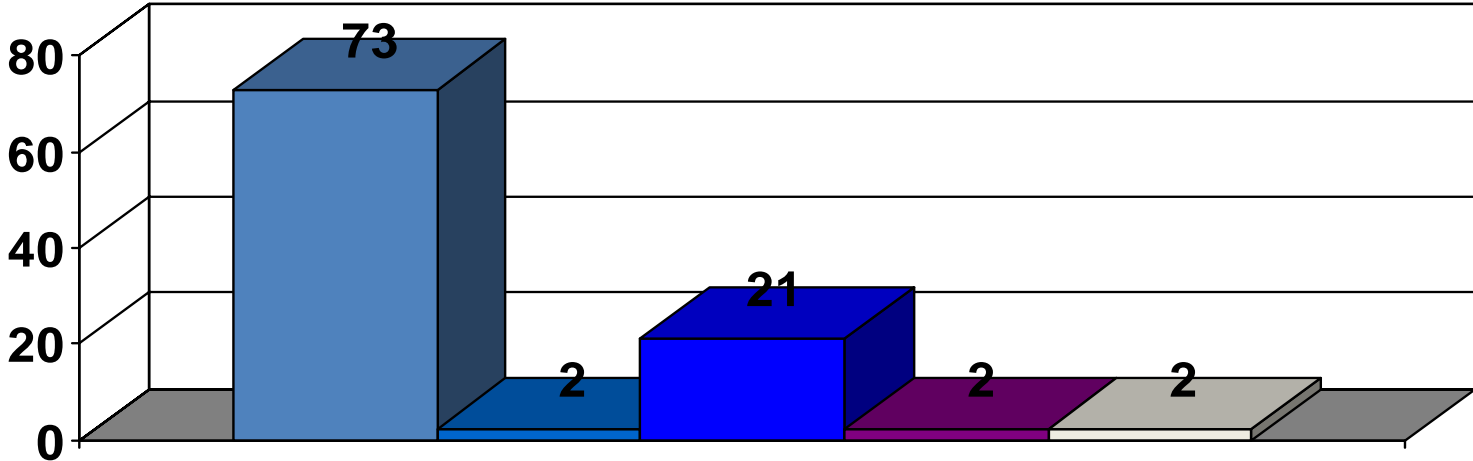
UNIVERSITY *of* MARYLAND  
MEDICAL SYSTEM

*Community Health Needs  
Assessment Survey Report  
May 2012*

# Baltimore City: All Zips

## Racial Composition

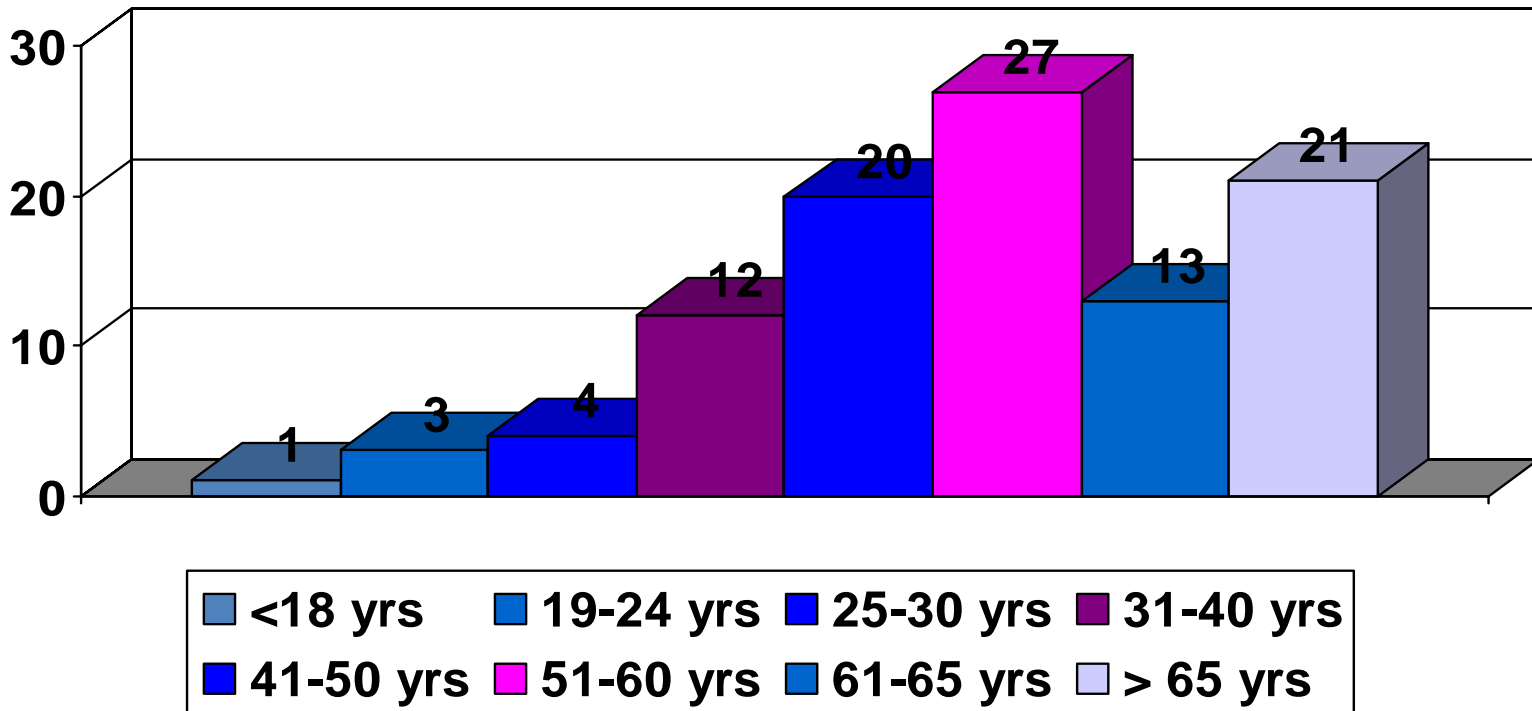
% of Respondents



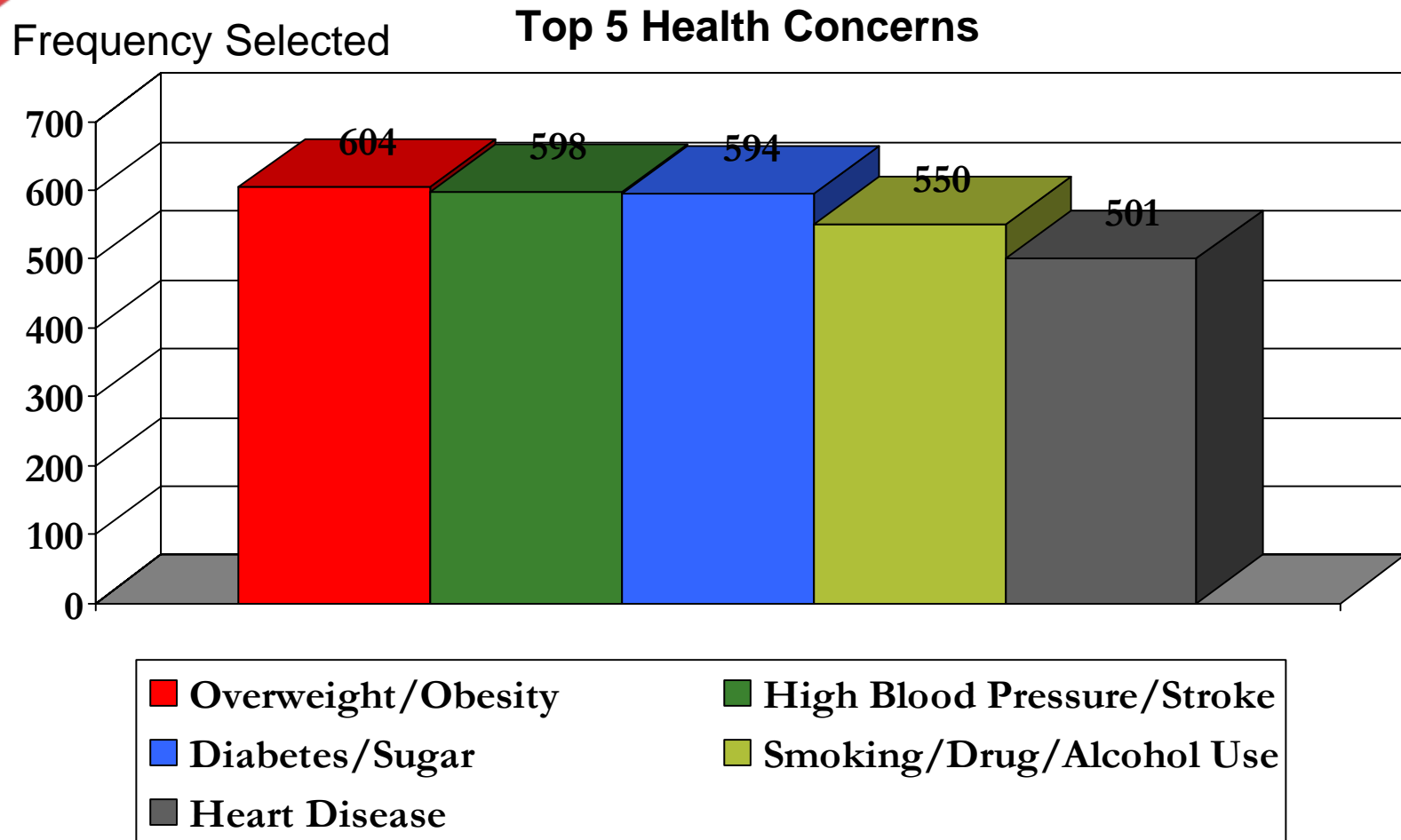
# Baltimore City: All Zips

## Age Group Composition

% of Respondents



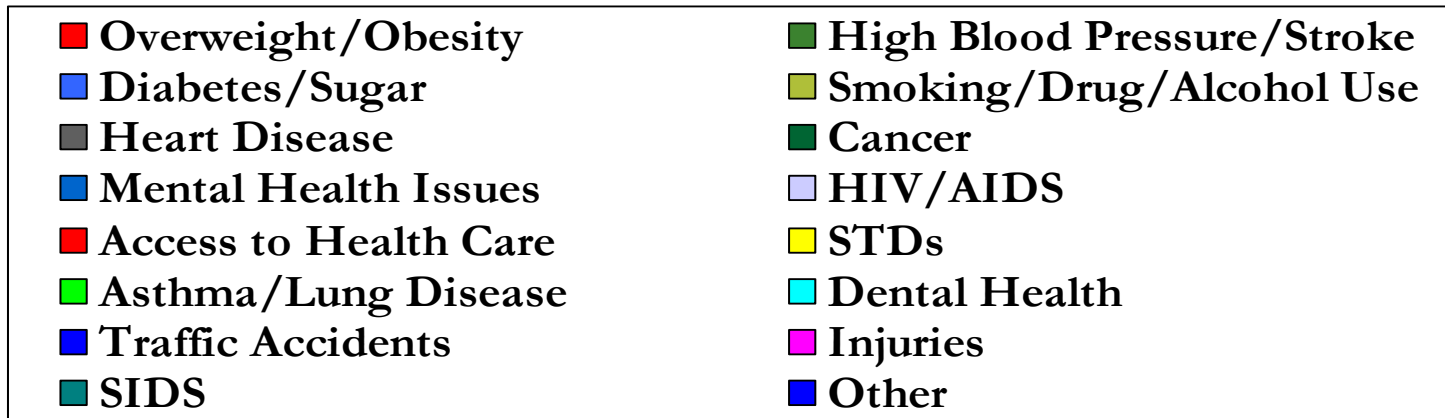
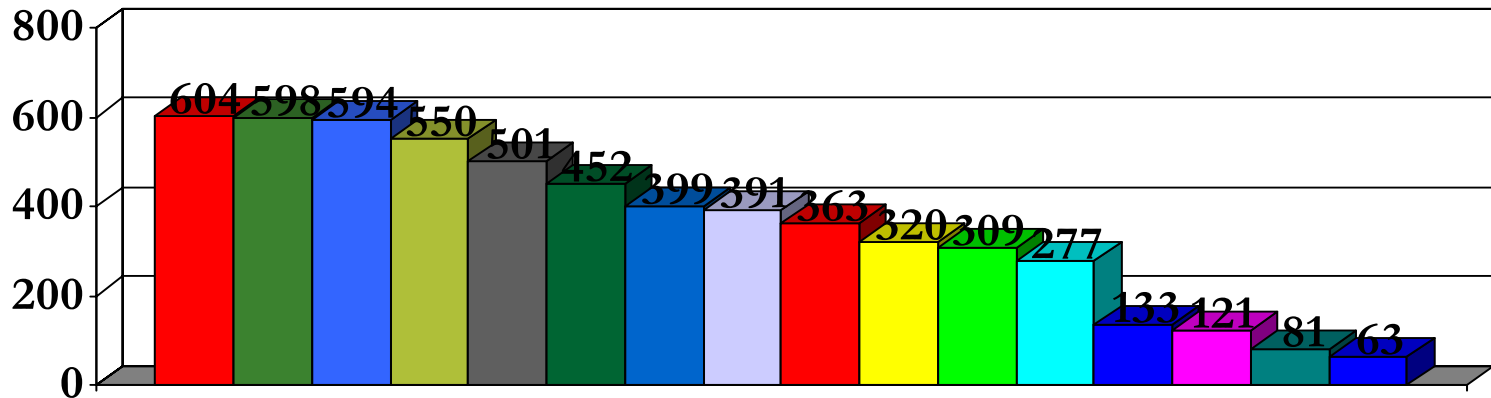
# Baltimore City: All Zips



# Baltimore City: All Zips

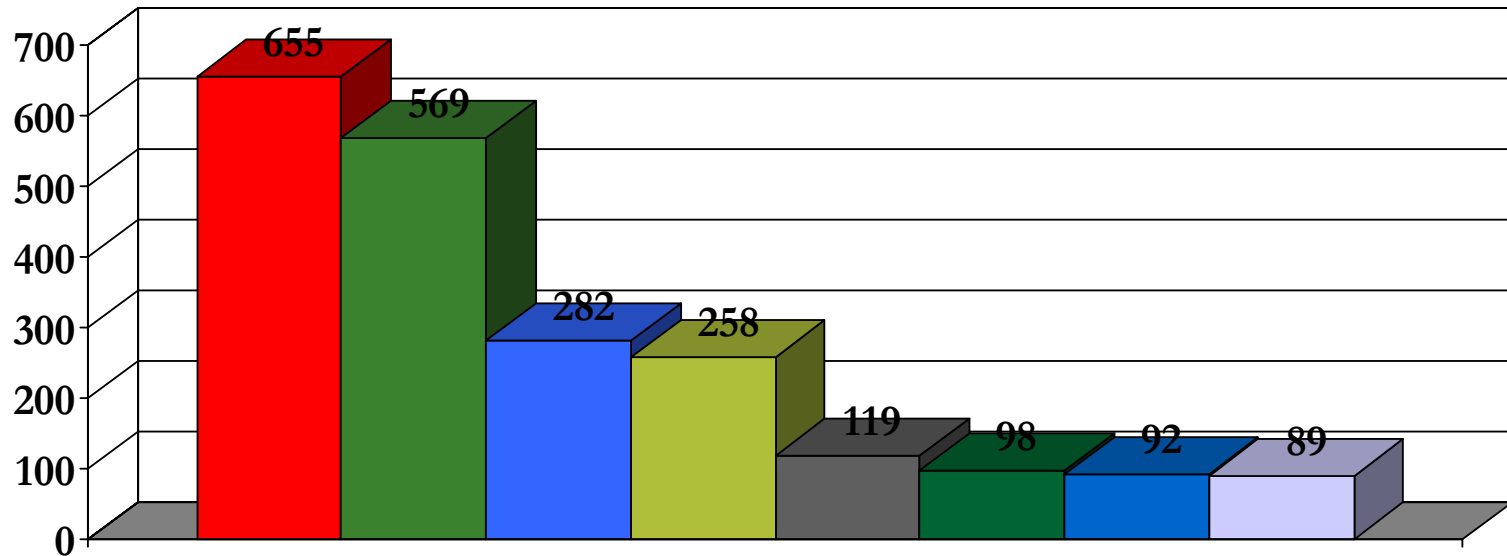
## Complete Ranking of All Health Concerns

Frequency Selected



# Baltimore City: All Zips

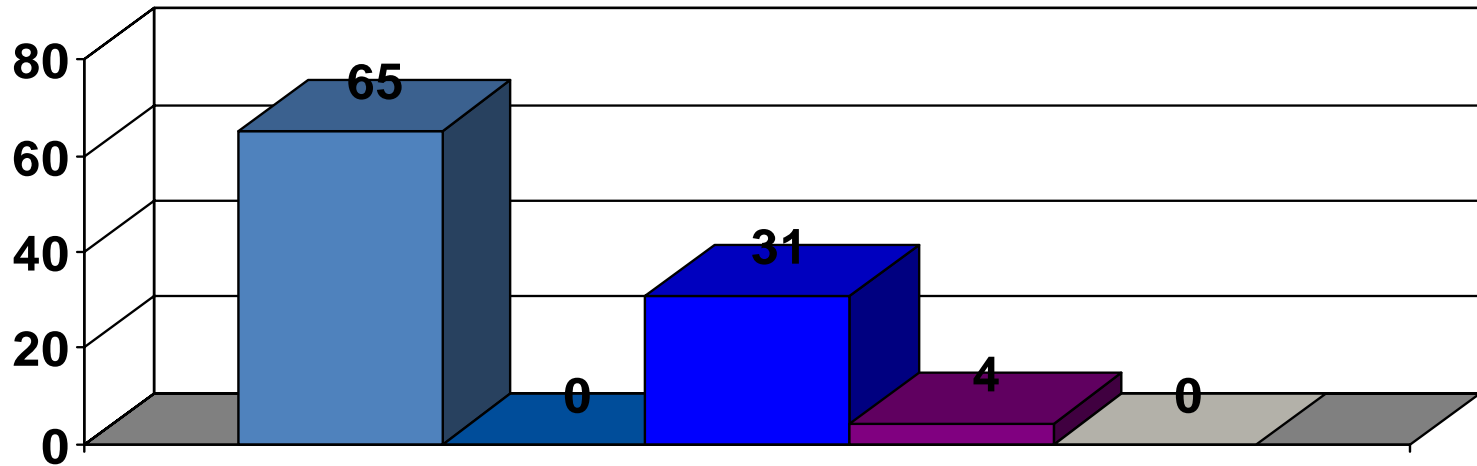
Frequency Selected **Complete Ranking of All Barriers to Health Care**



# Baltimore City: 21201

## Racial Composition

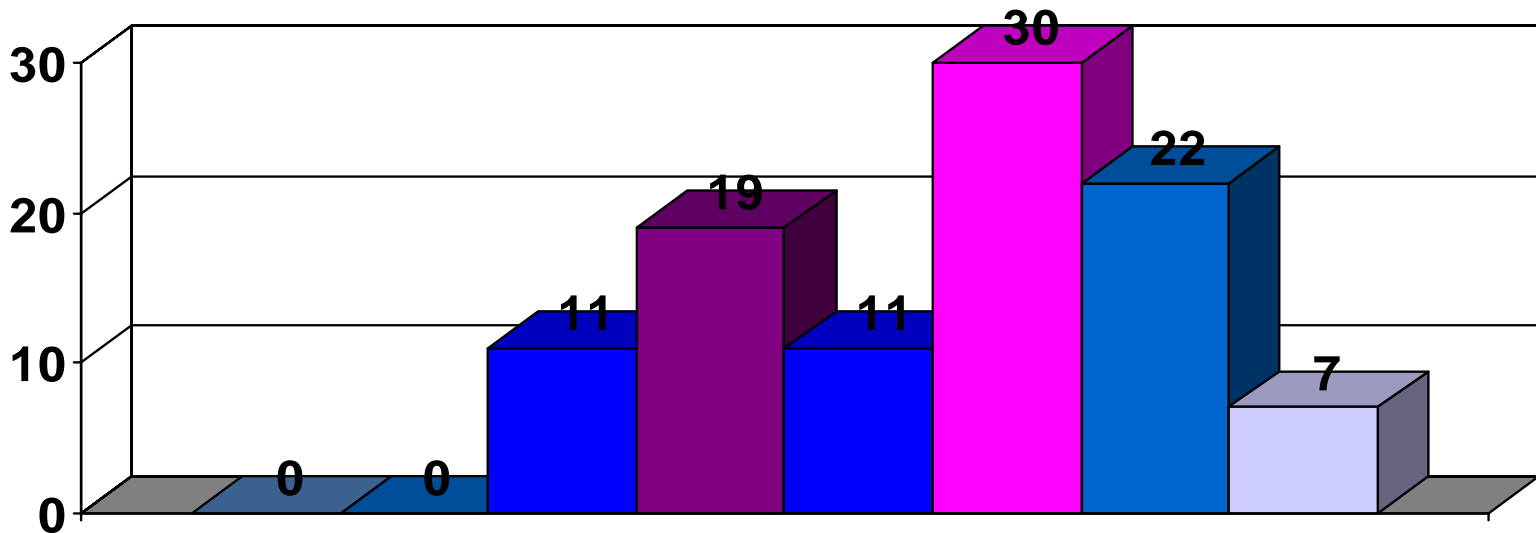
% of Respondents



# Baltimore City: 21201

## Age Group Composition

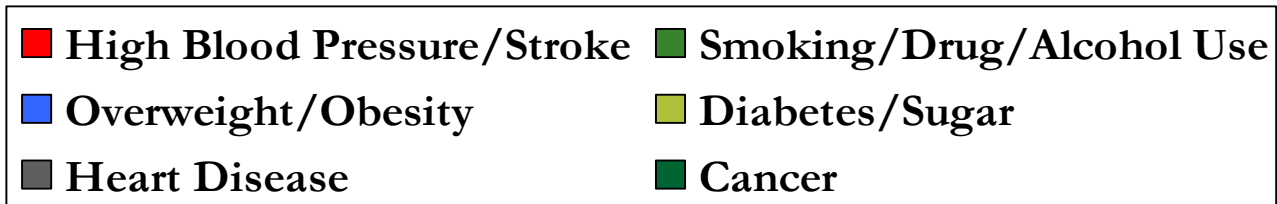
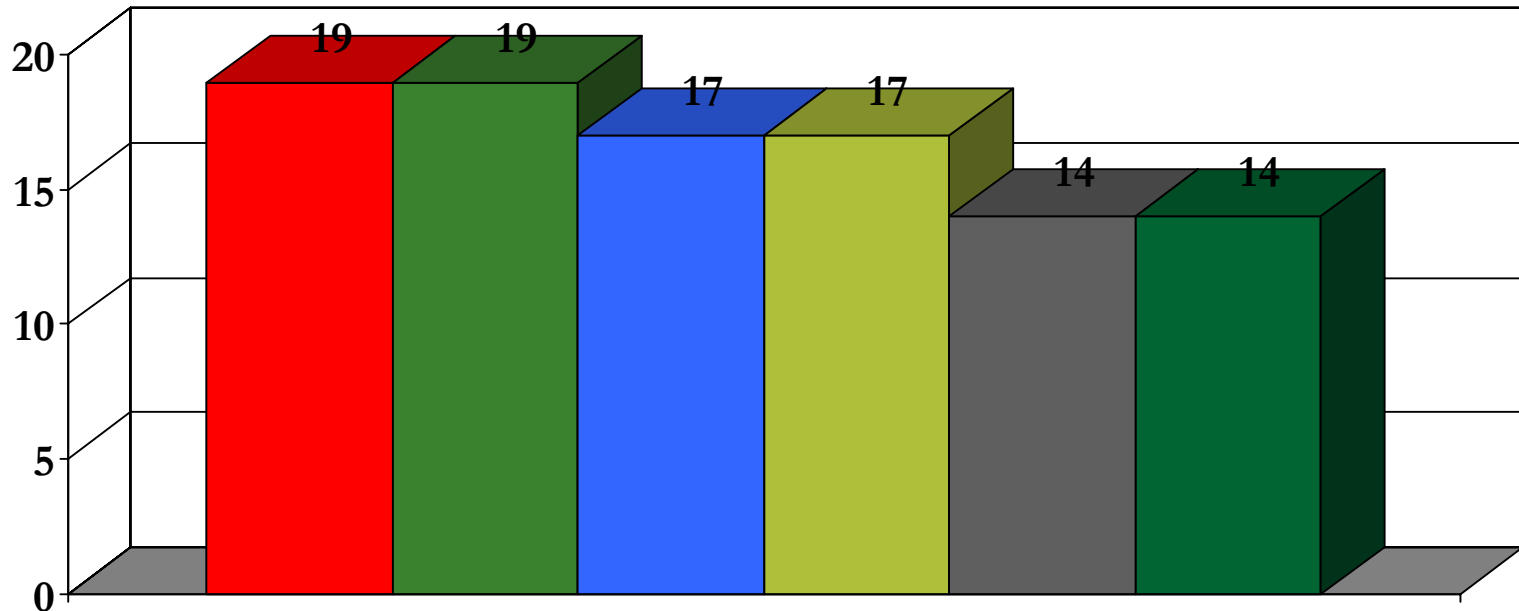
% of Respondents





# Baltimore City: 21201

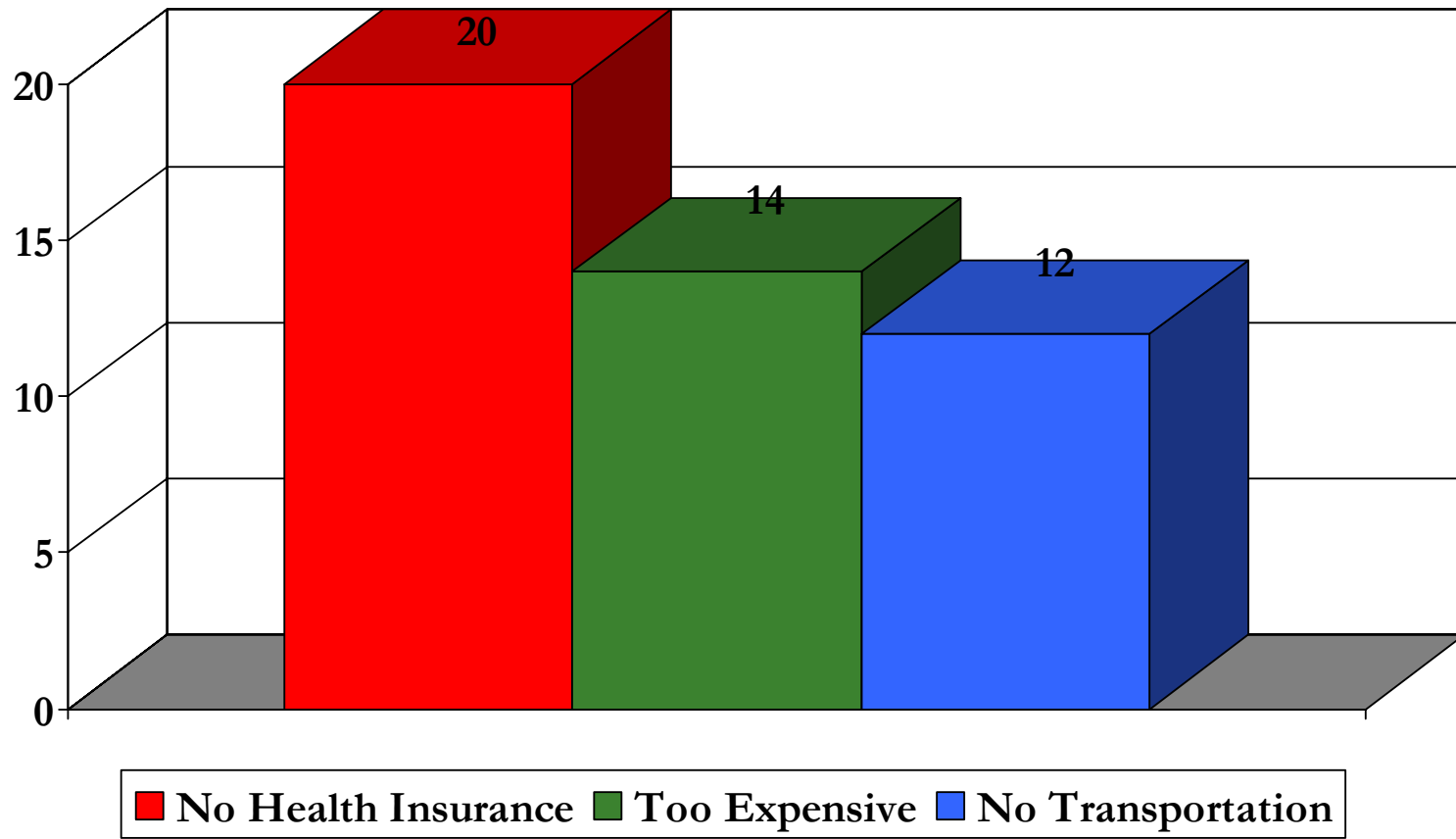
Frequency Selected **Top 6 Health Concerns**



# Baltimore City: 21201

## Top Barriers to Health Care

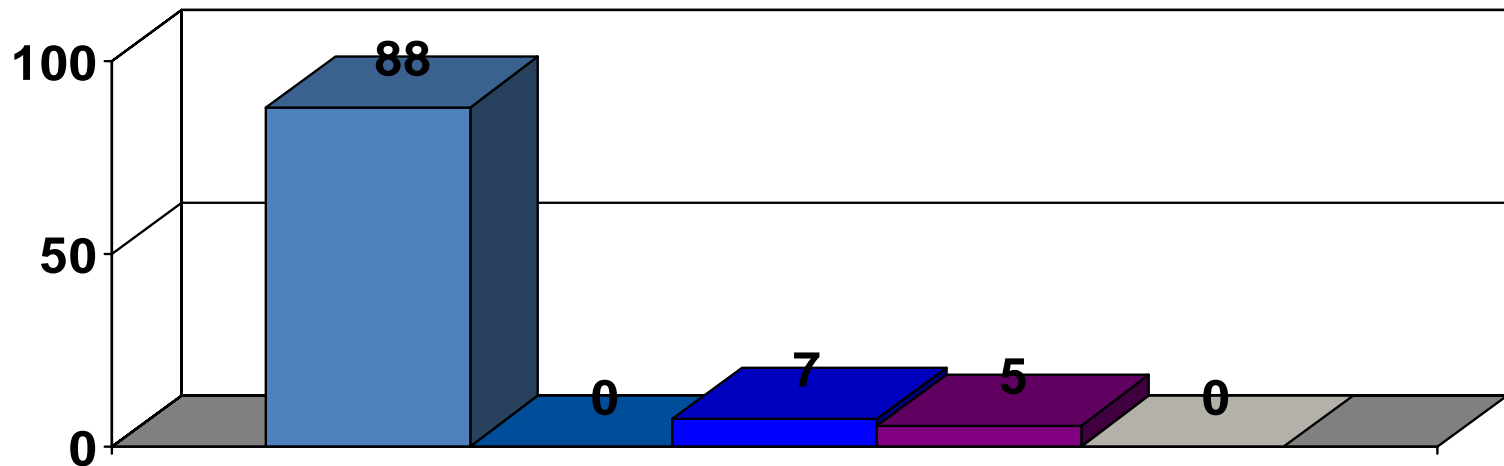
Frequency Selected



# Baltimore City: 21207

## Racial Composition

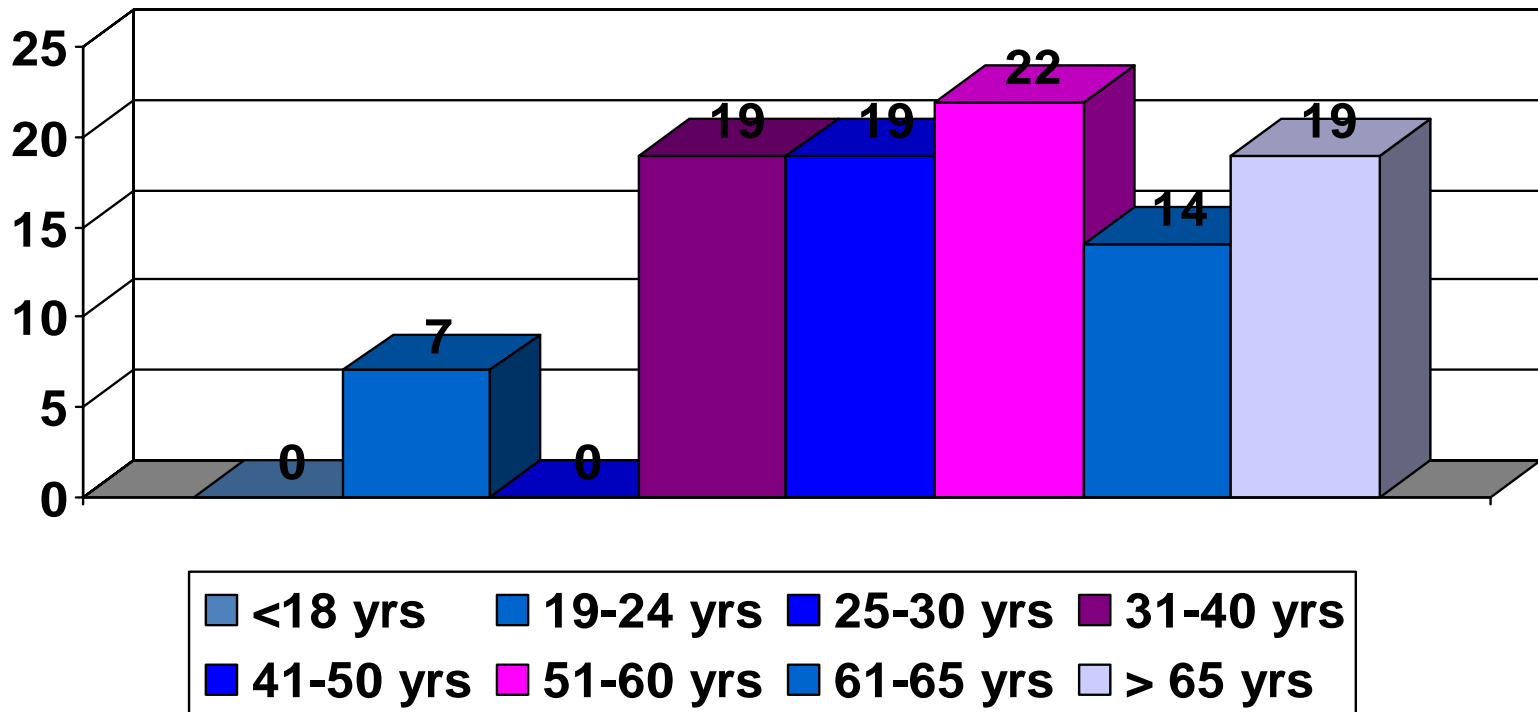
% of Respondents



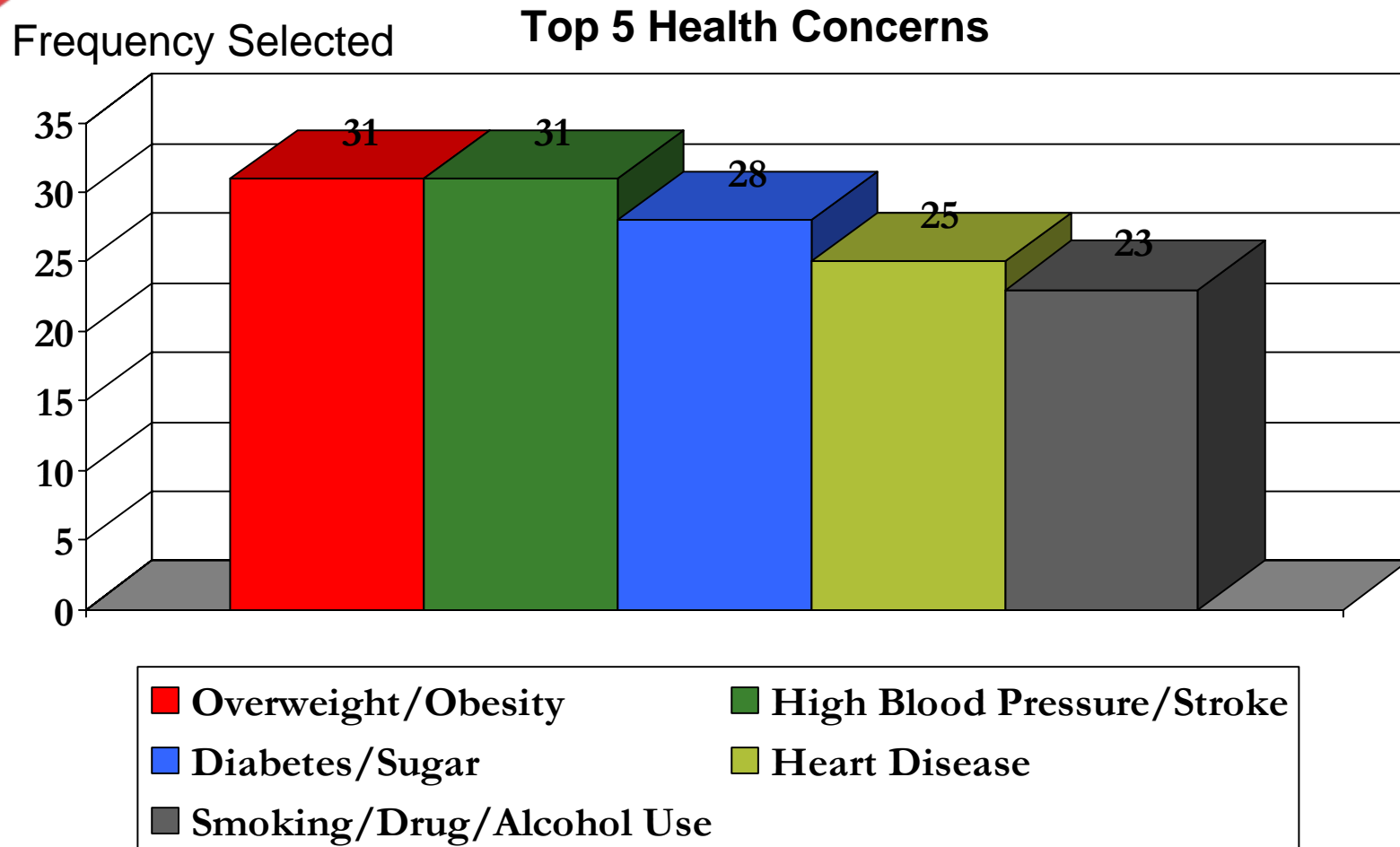
# Baltimore City: 21207

## Age Group Composition

% of Respondents



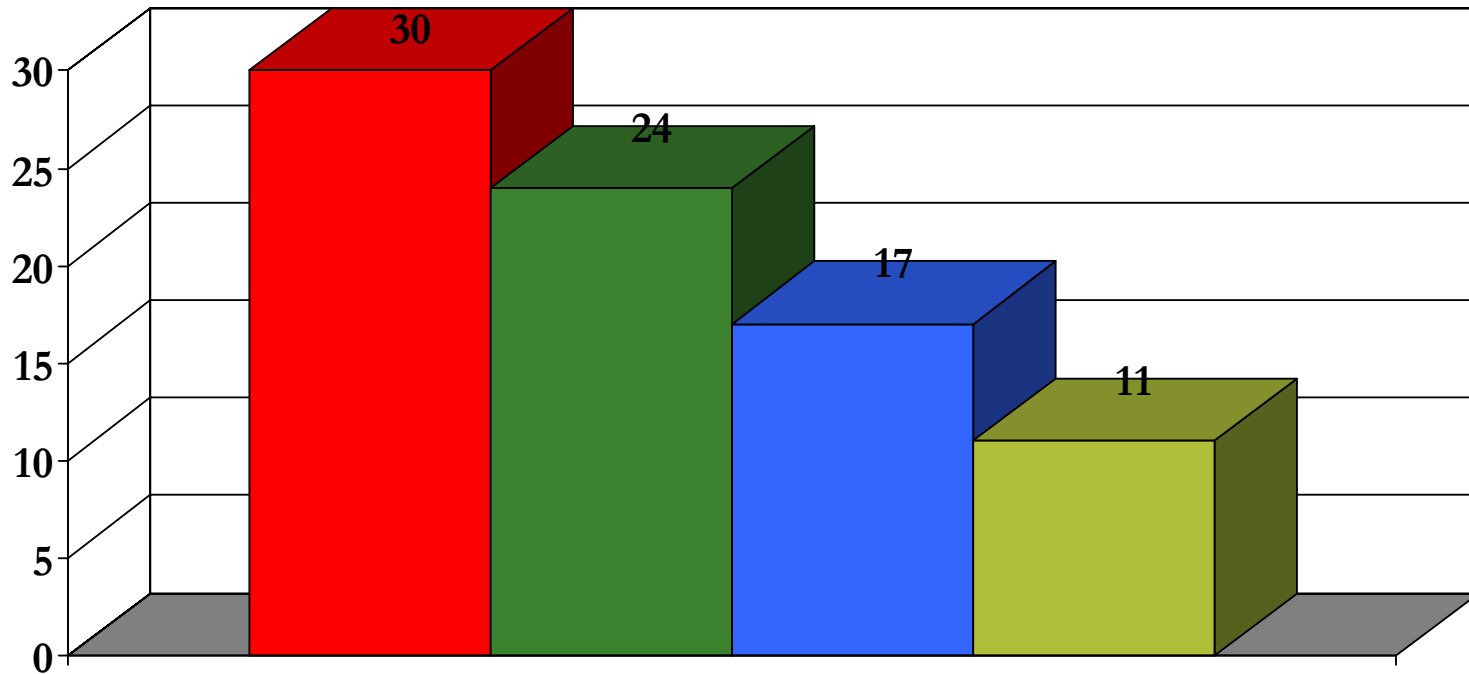
# Baltimore City: 21207



# Baltimore City: 21207

## Top Barriers to Health Care

Frequency Selected

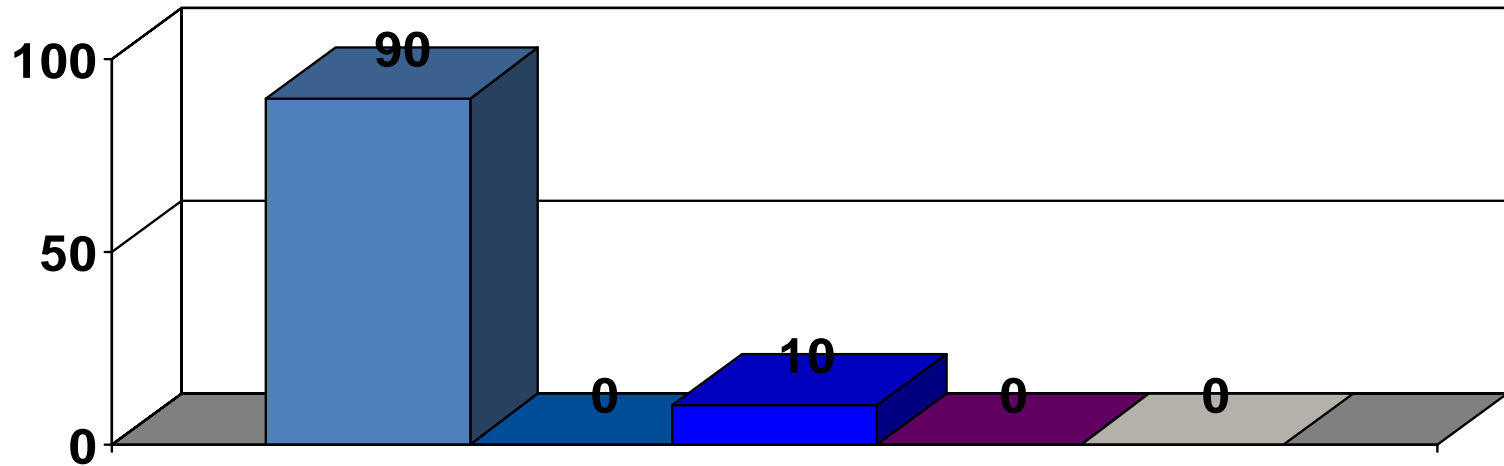


**No Health Insurance**    **Too Expensive**  
**Local MDs Not in Plan**    **No Transportation**

# Baltimore City: 21213

## Racial Composition

% of Respondents



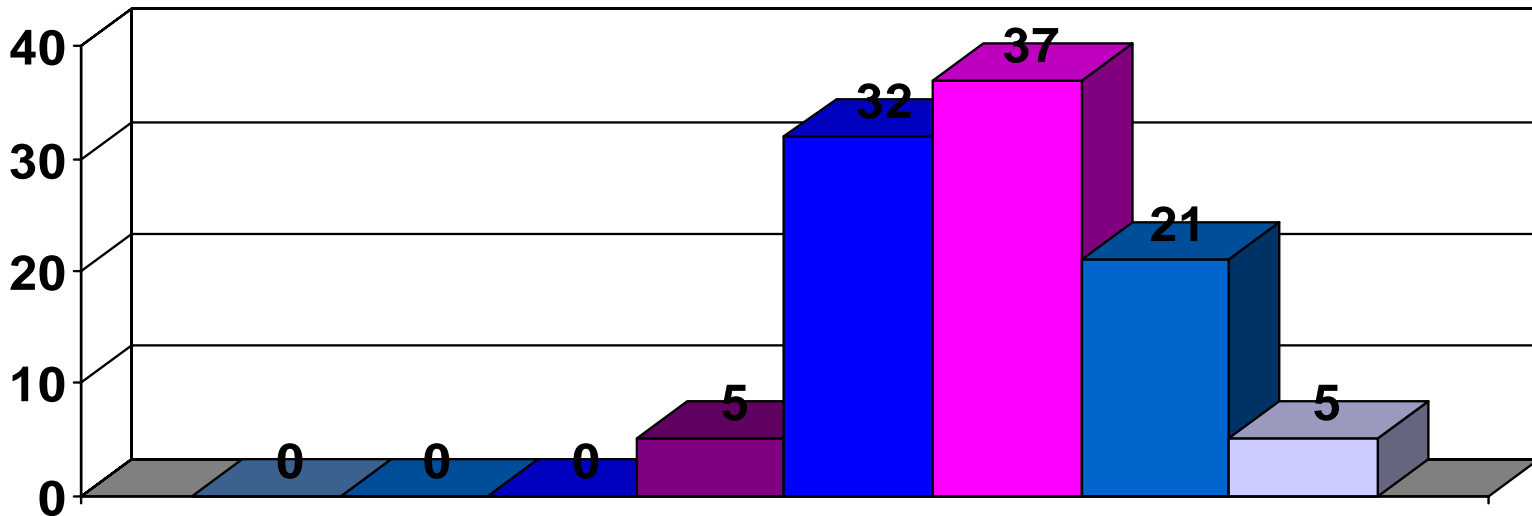
N = 20

Sample sizes <30 are not completely reliable

# Baltimore City: 21213

## Age Group Composition

% of Respondents



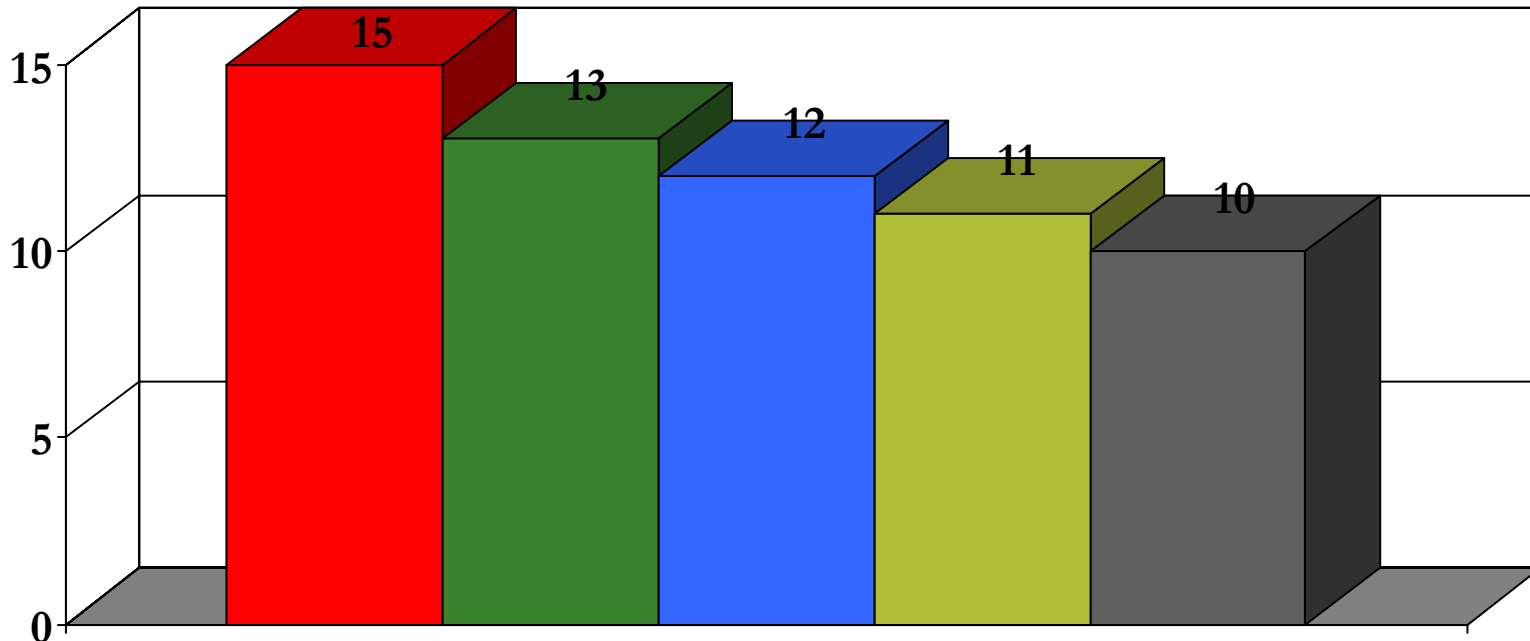
N = 20

Sample sizes <30 are not completely reliable



# Baltimore City: 21213

## Top 5 Health Concerns



- |                              |                            |
|------------------------------|----------------------------|
| ■ High Blood Pressure/Stroke | ■ Diabetes/Sugar           |
| ■ Overweight/Obesity         | ■ Smoking/Drug/Alcohol Use |
| ■ Asthma/Lung Disease        |                            |

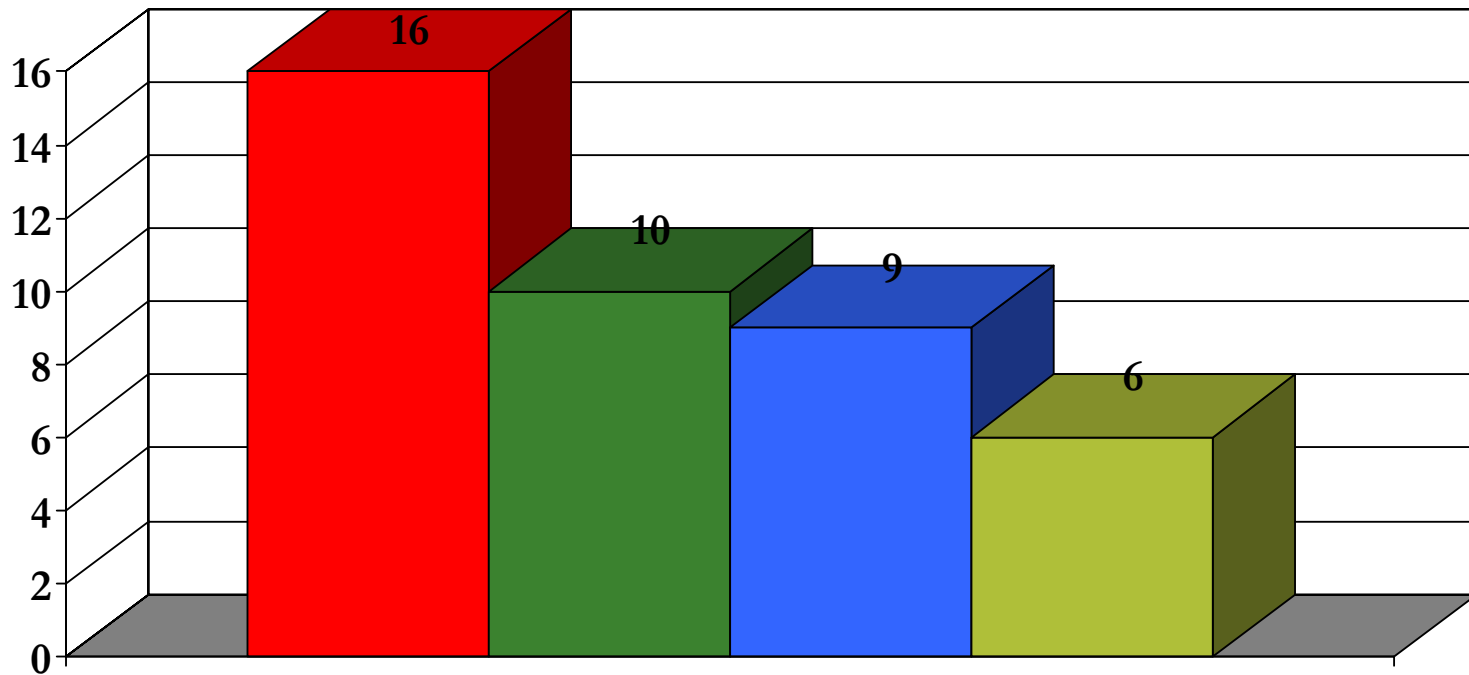
N = 20

Sample sizes <30 are not completely reliable

# Baltimore City: 21213

## Top Barriers to Health Care

Frequency Selected



**No Health Insurance**

**No Transportation**

**Too Expensive/Can't Afford It**

**Local MDs Not Part of Plan**

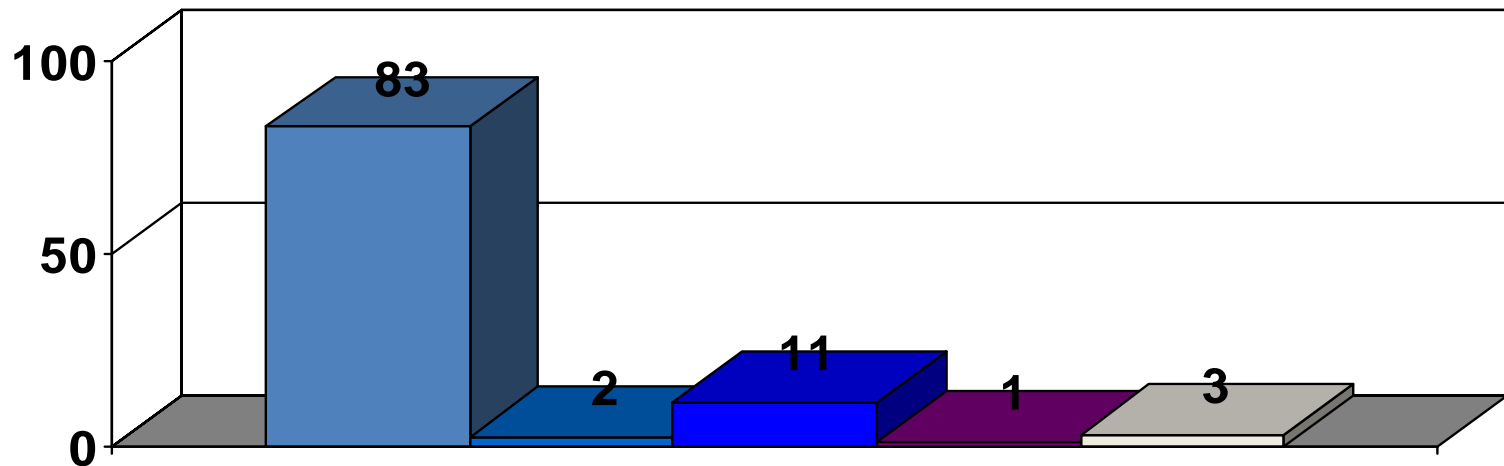
N = 20

Sample sizes <30 are not completely reliable

# Baltimore City: 21215

## Racial Composition

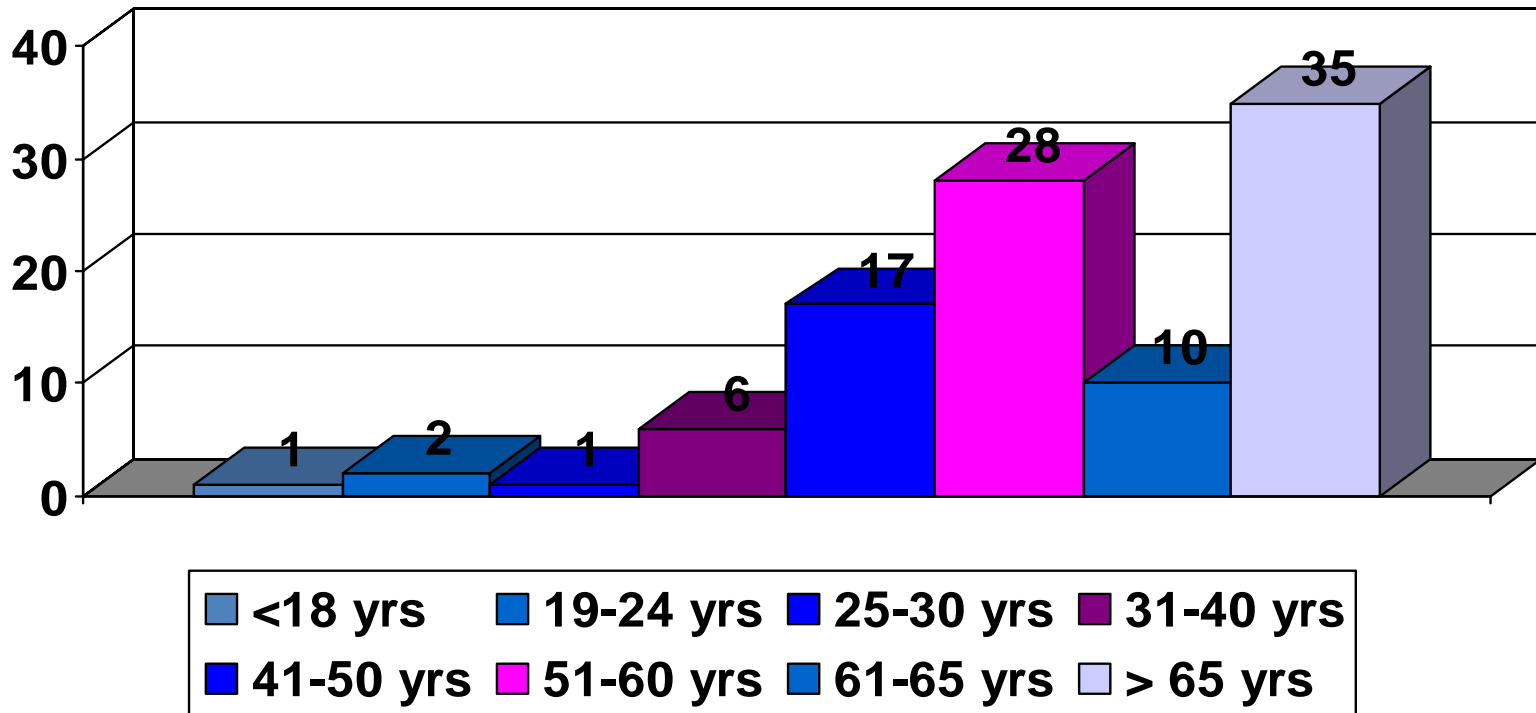
% of Respondents



# Baltimore City: 21215

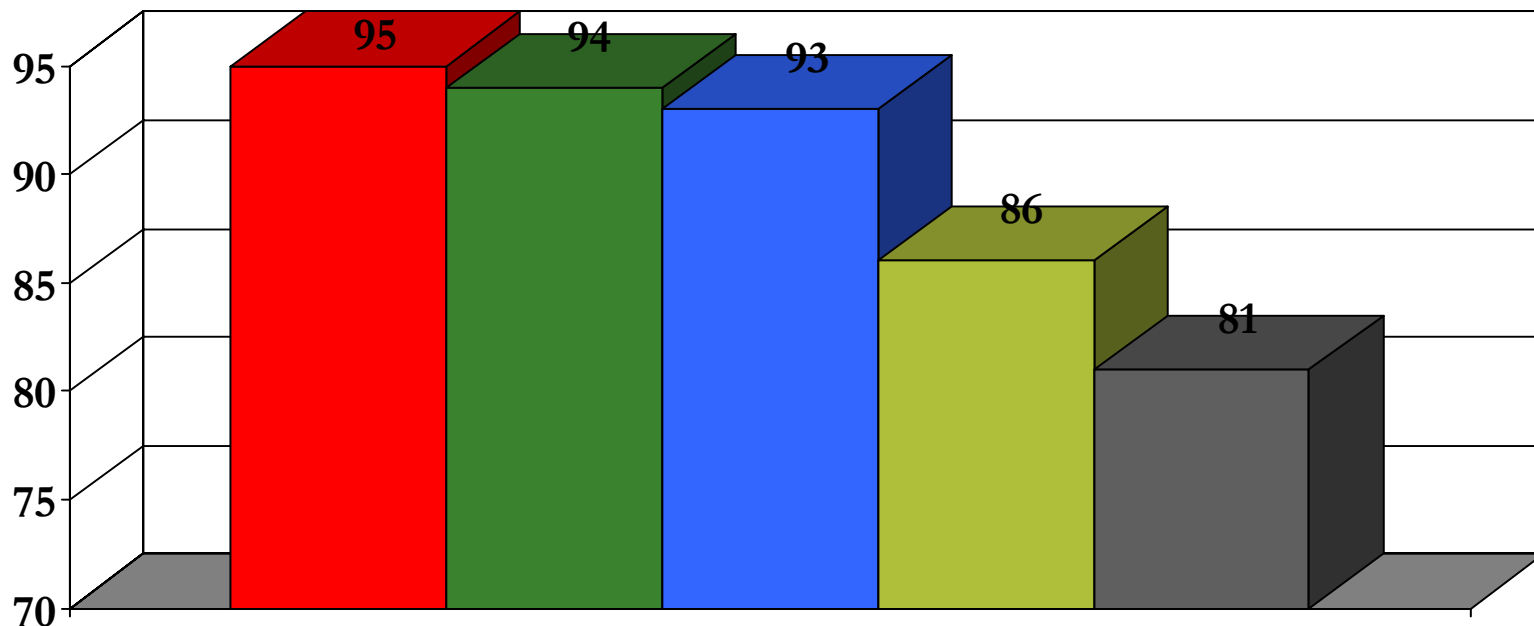
## Age Group Composition

% of Respondents



# Baltimore City: 21215

## Top 5 Health Concerns

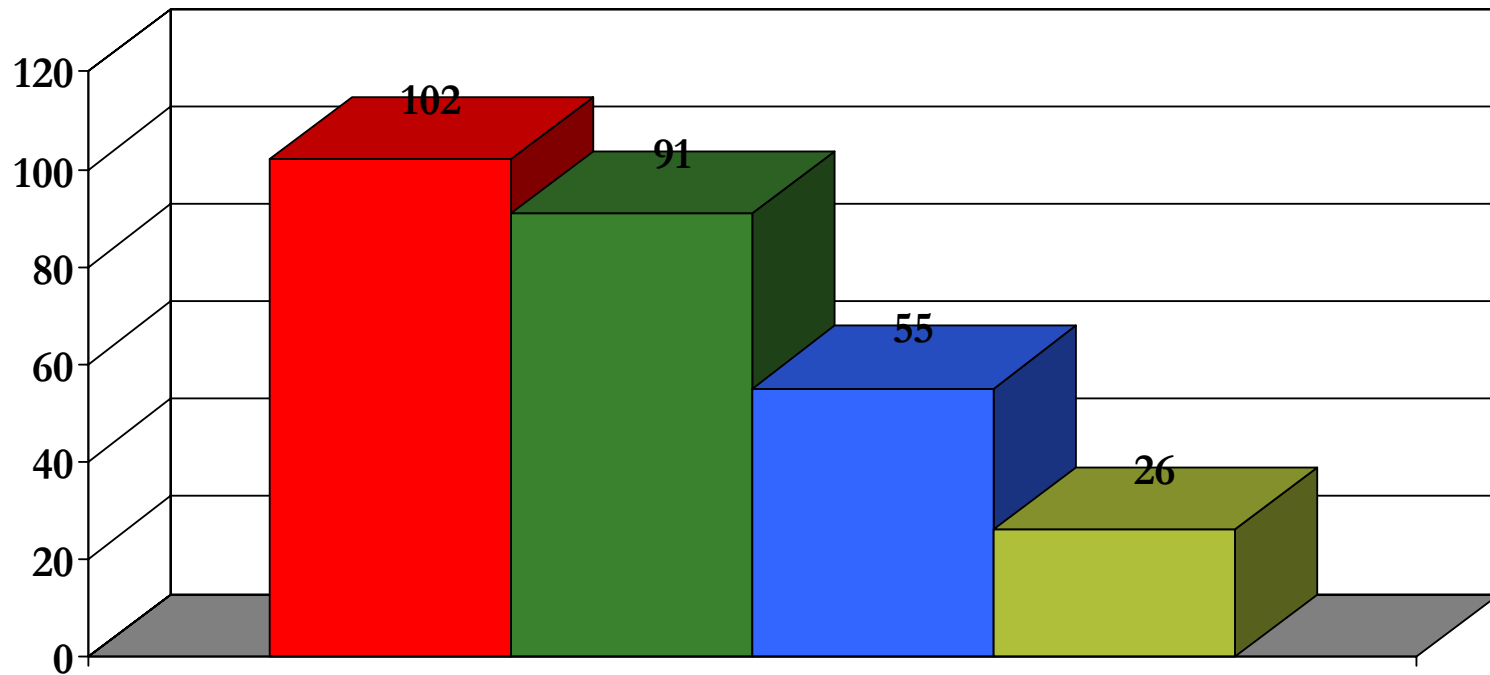


■ High Blood Pressure/Stroke    ■ Diabetes/Sugar  
■ Overweight/Obesity            ■ Smoking/Drug/Alcohol Use  
■ Heart Disease

# Baltimore City: 21215

## Top Barriers to Health Care

Frequency Selected

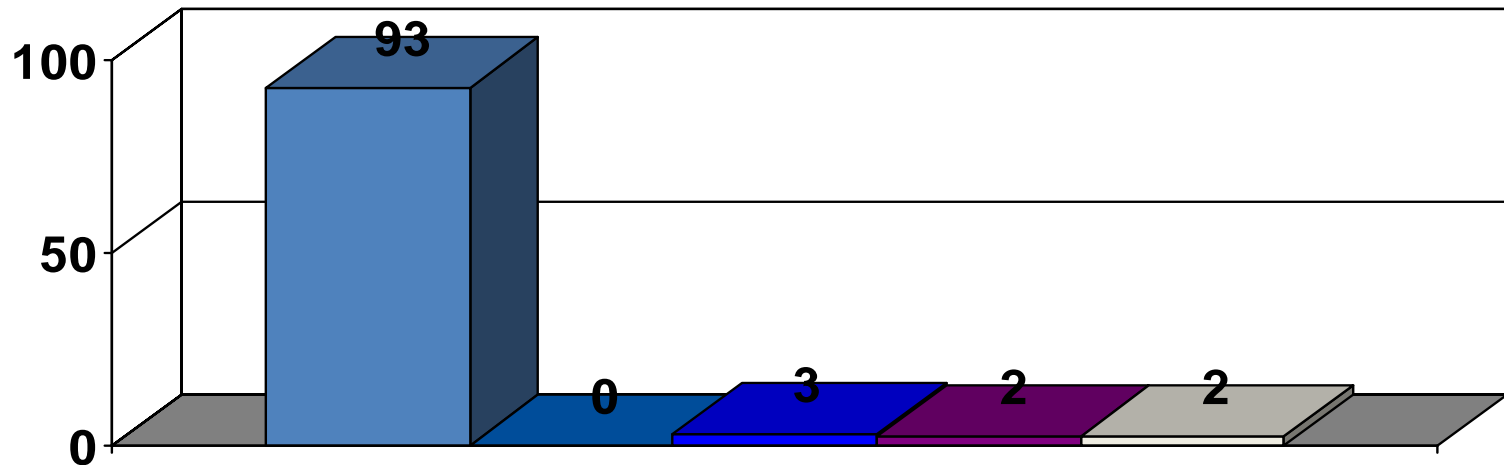


N = 130

# Baltimore City: 21216

## Racial Composition

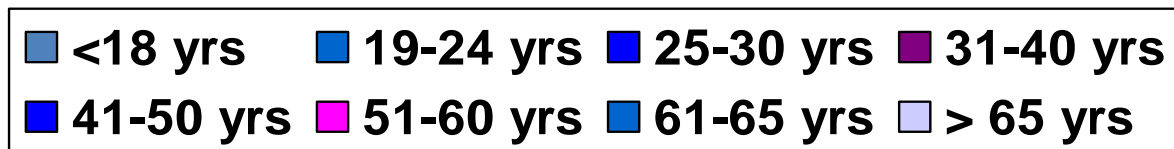
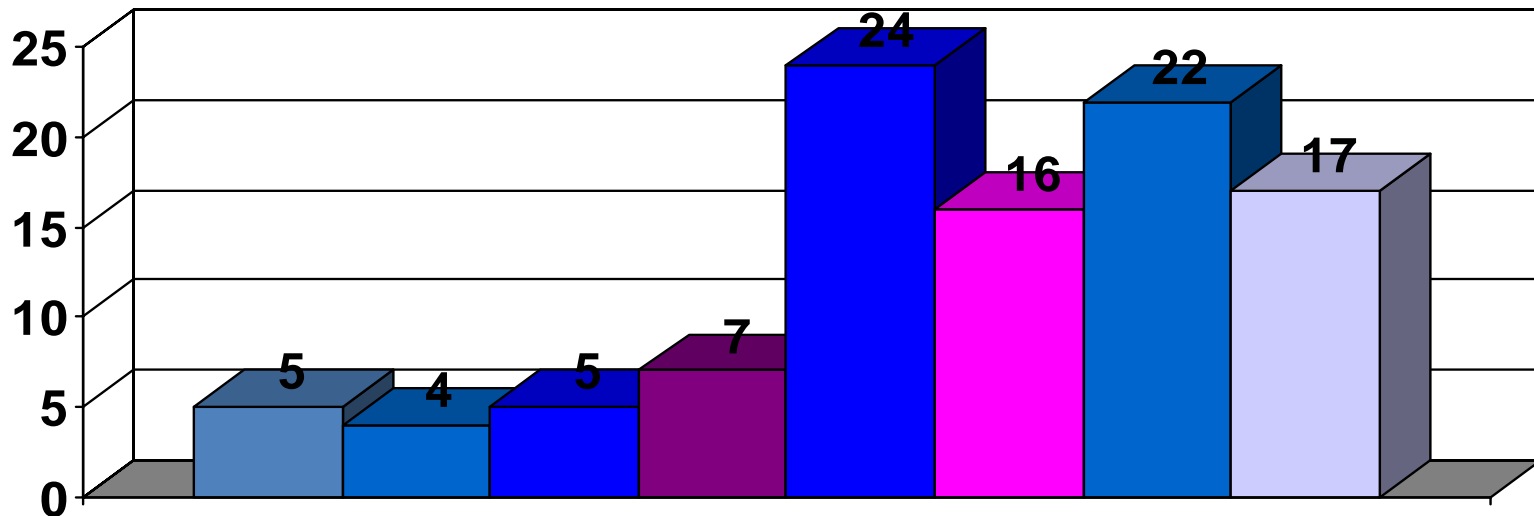
% of Respondents



# Baltimore City: 21216

## Age Group Composition

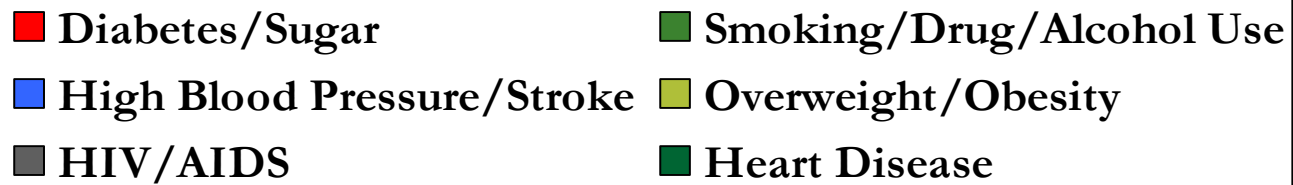
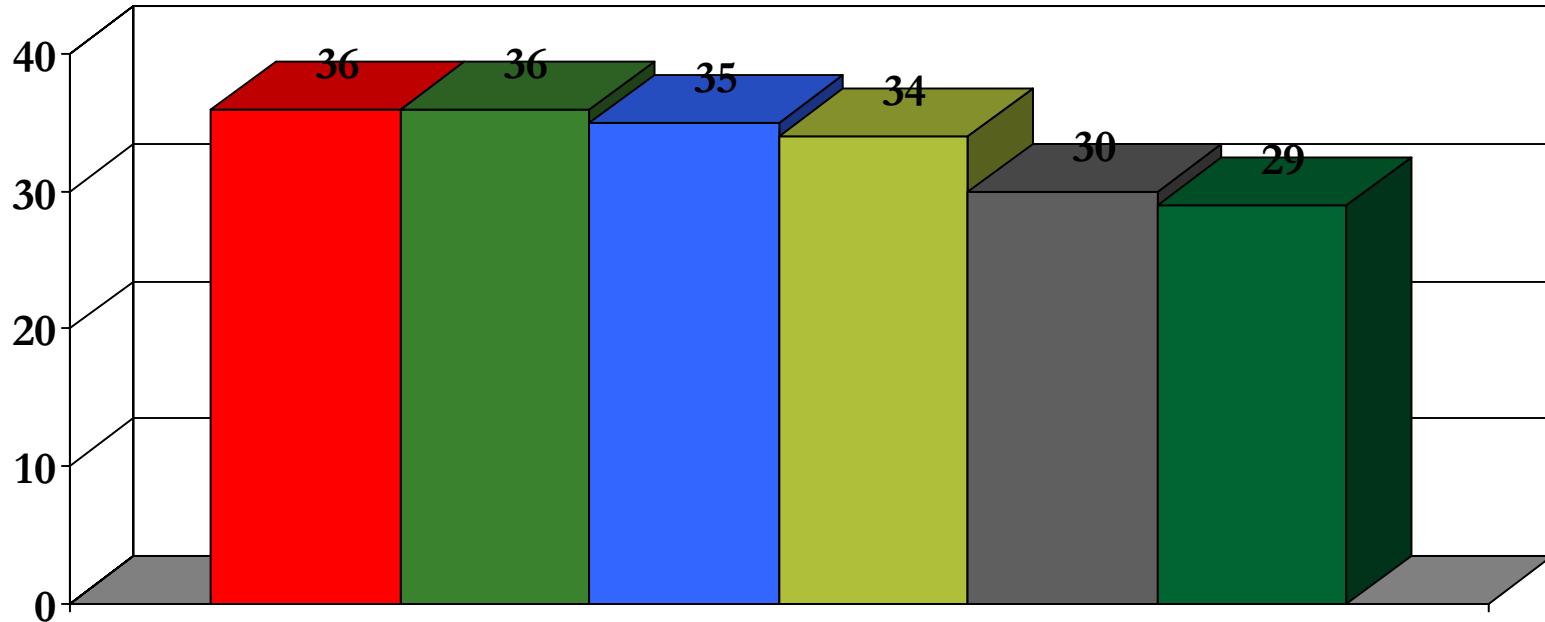
% of Respondents





# Baltimore City: 21216

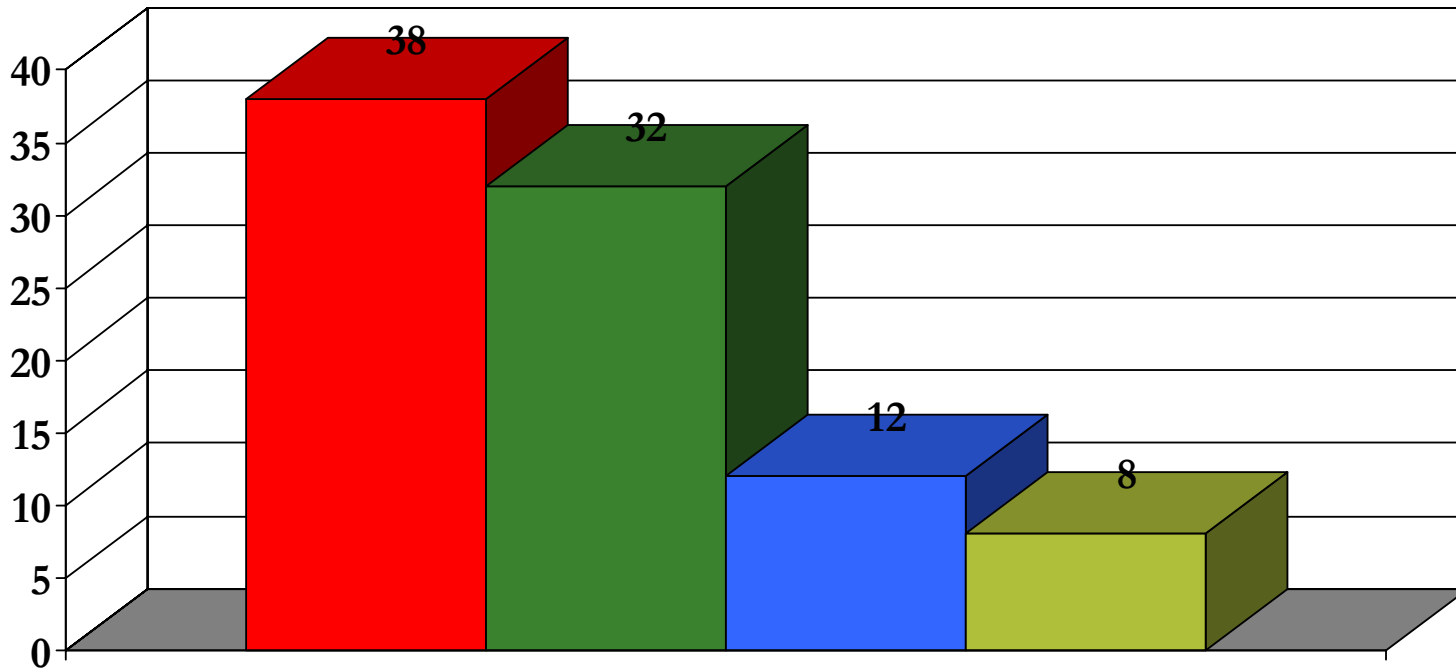
## Top 6 Health Concerns



# Baltimore City: 21216

## Top Barriers to Health Care

Frequency Selected

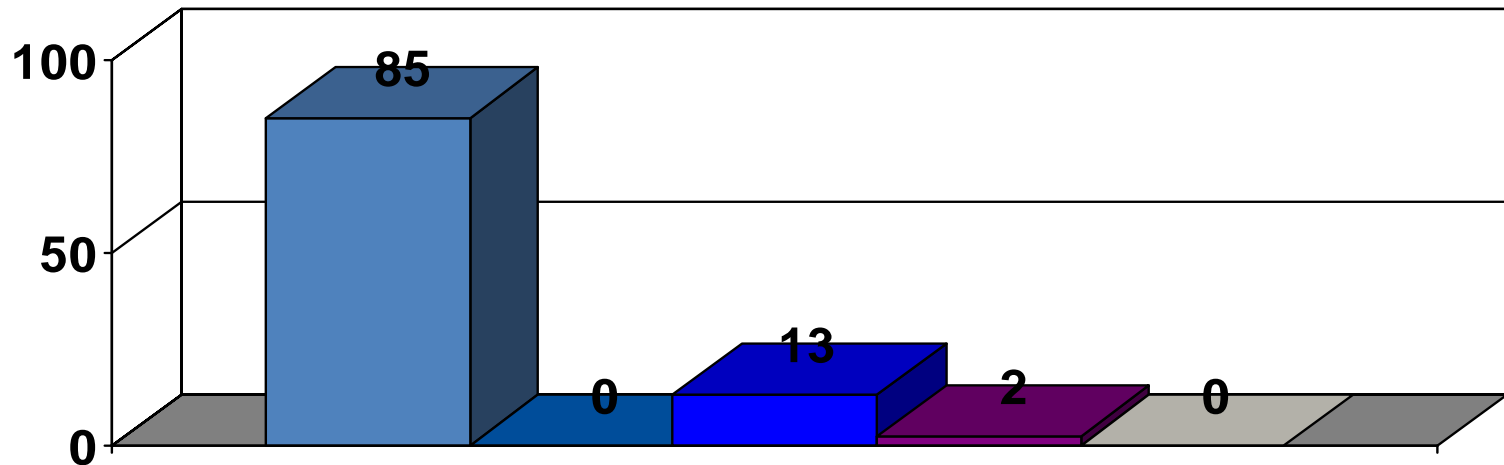


**■ No Health Insurance**      **■ Too Expensive**  
**■ Local MDs not on My Plan**      **■ No Transportation**

# Baltimore City: 21217

## Racial Composition

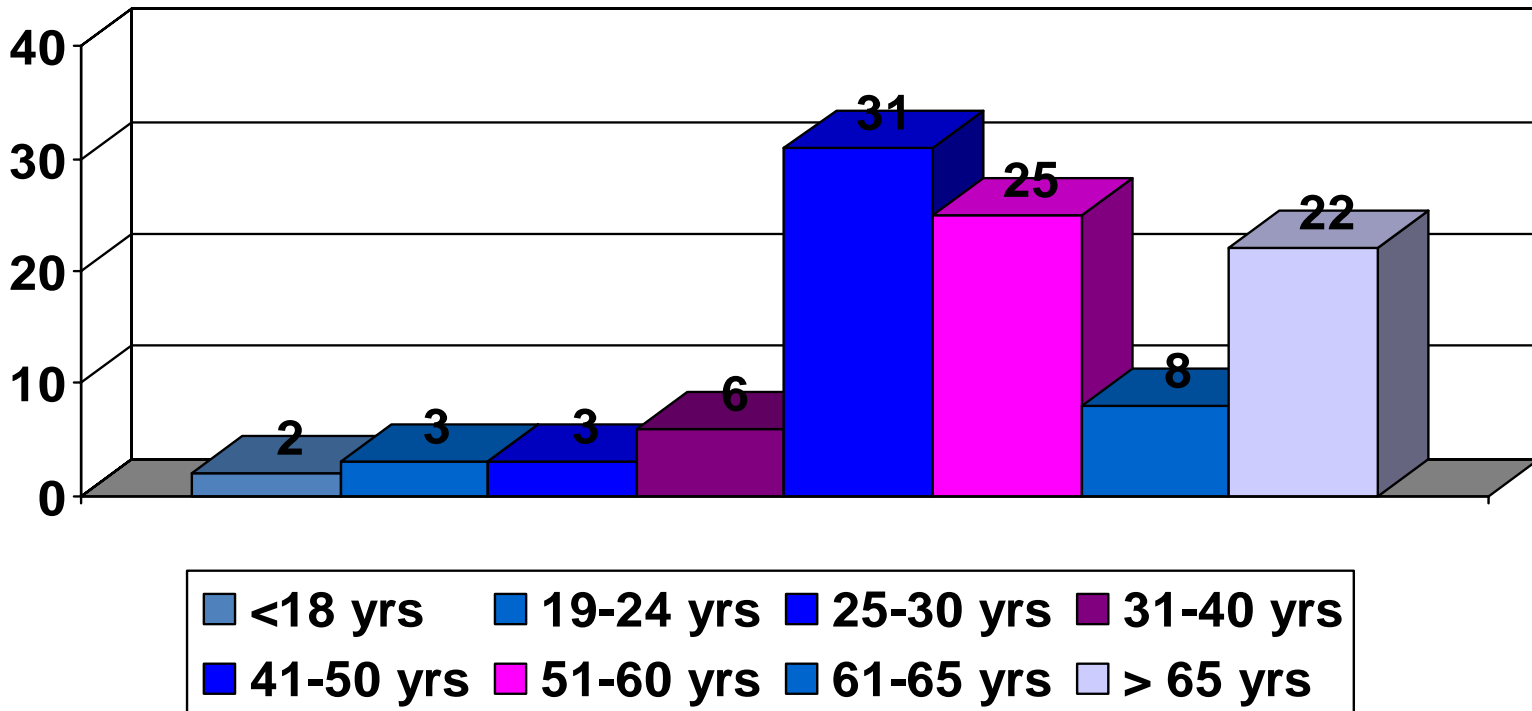
% of Respondents



# Baltimore City: 21217

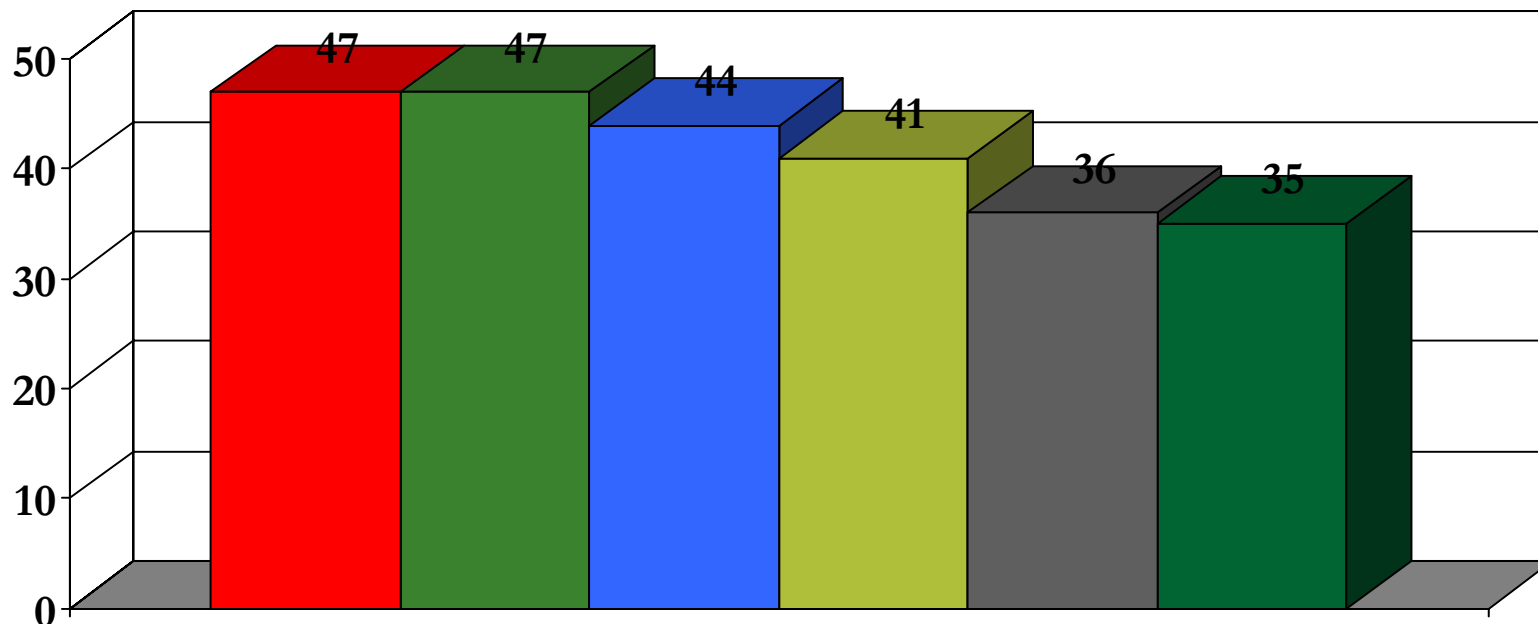
## Age Group Composition

% of Respondents



# Baltimore City: 21217

## Top 6 Health Concerns



■ Diabetes/Sugar

■ High Blood Pressure/Stroke

■ Smoking/Drug/Alcohol Use

■ Overweight/Obesity

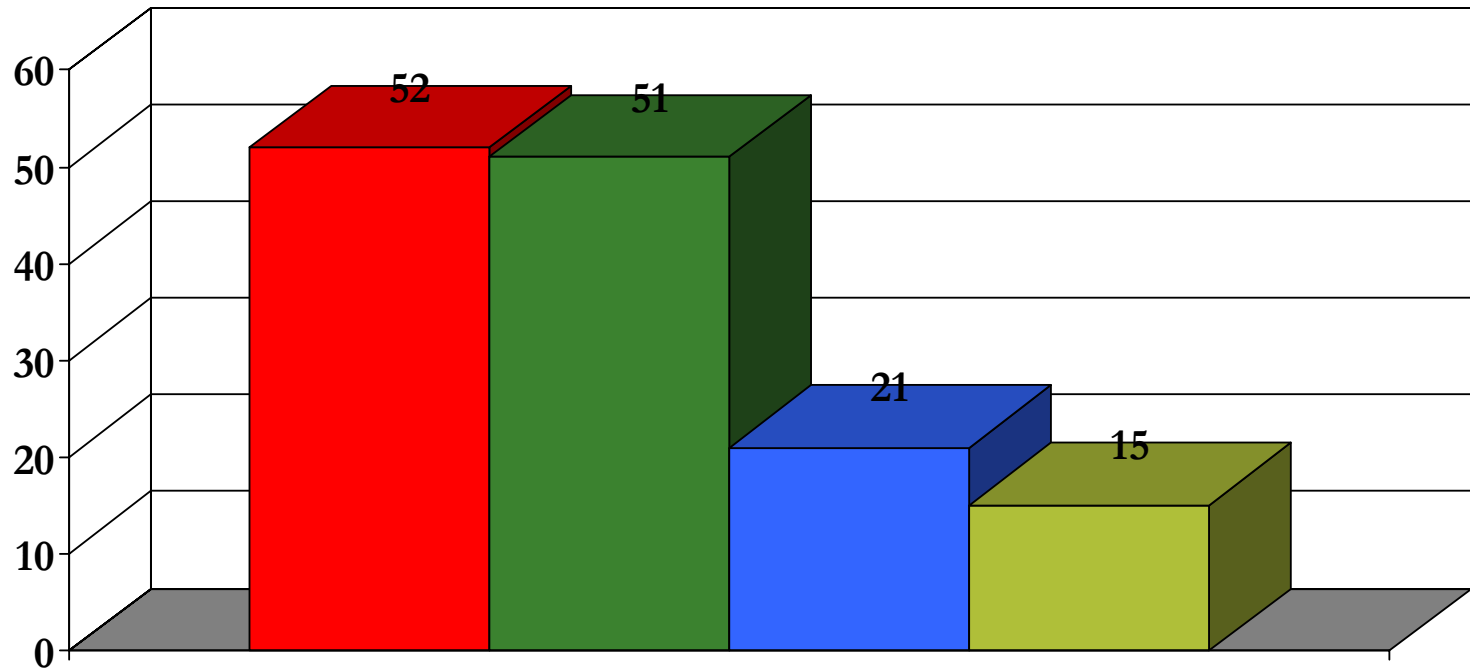
■ HIV/AIDS

■ Cancer

# Baltimore City: 21217

## Top Barriers to Health Care

Frequency Selected



**No Health Insurance**

**Too Expensive**

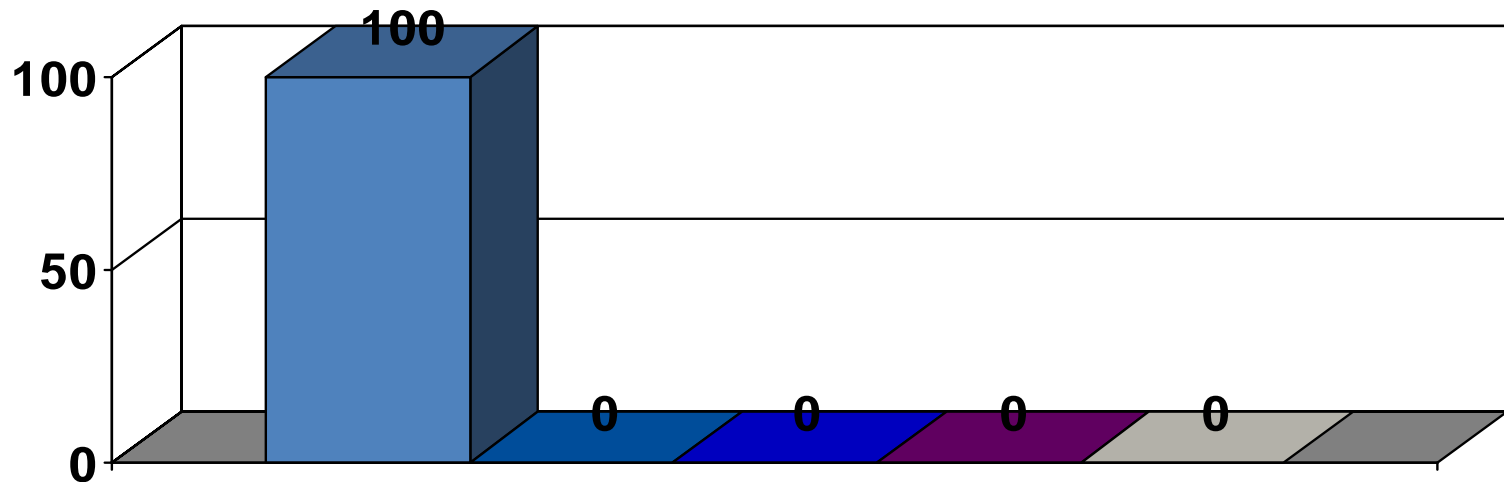
**No Transportation**

**Local MDs not on My Plan**

# Baltimore City: 21218

## Racial Composition

% of Respondents



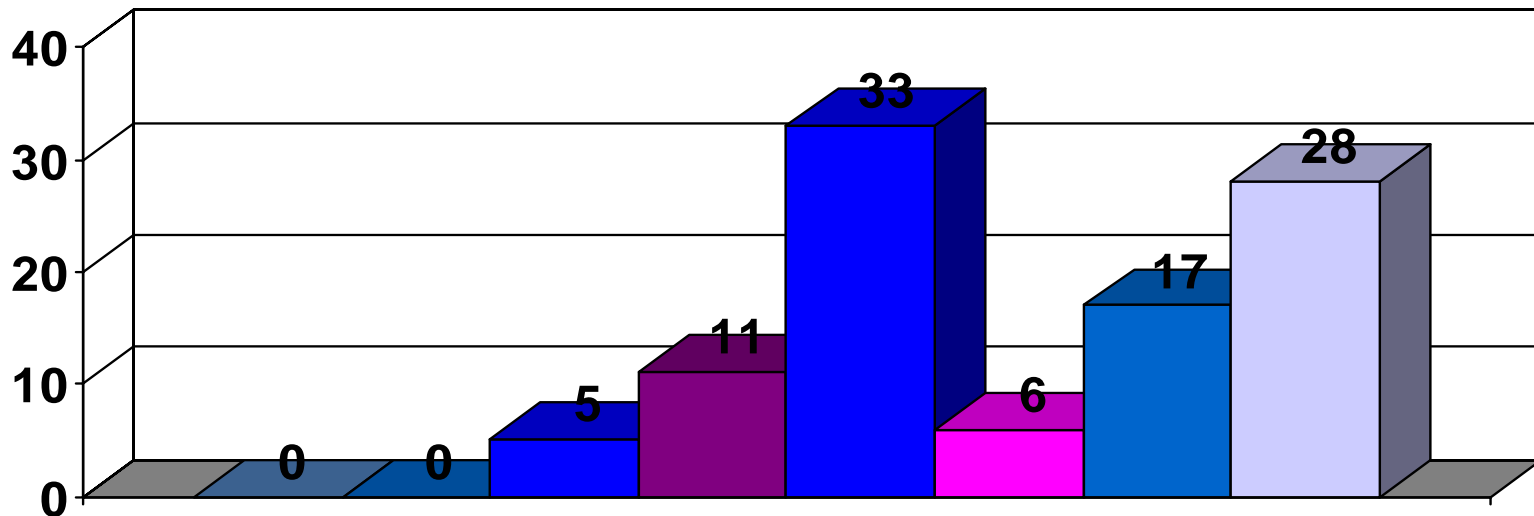
N = 18

Sample sizes <30 are not completely reliable

# Baltimore City: 21218

## Age Group Composition

% of Respondents



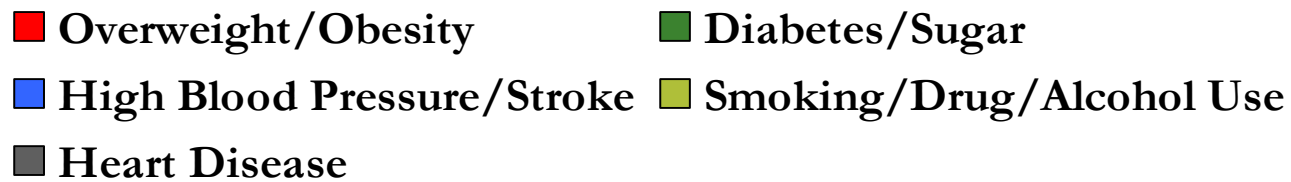
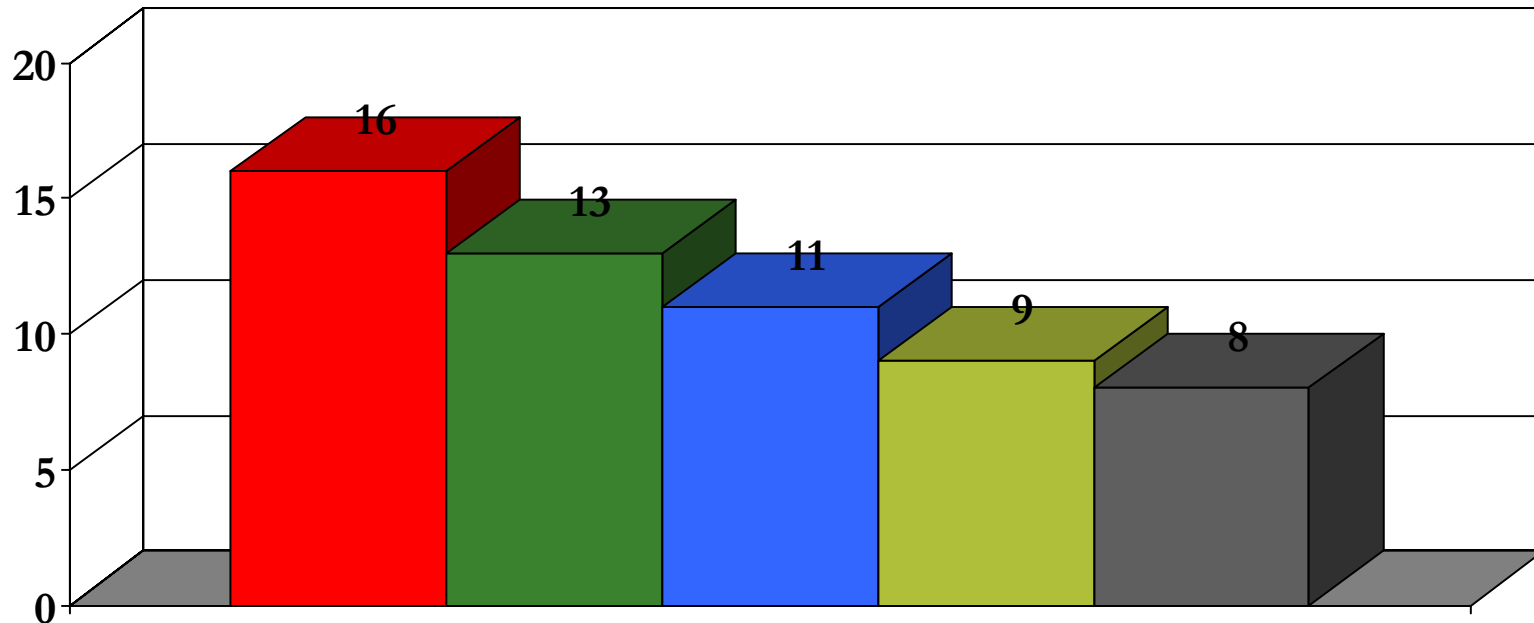
N = 18

Sample sizes <30 are not completely reliable



# Baltimore City: 21218

## Top 5 Health Concerns



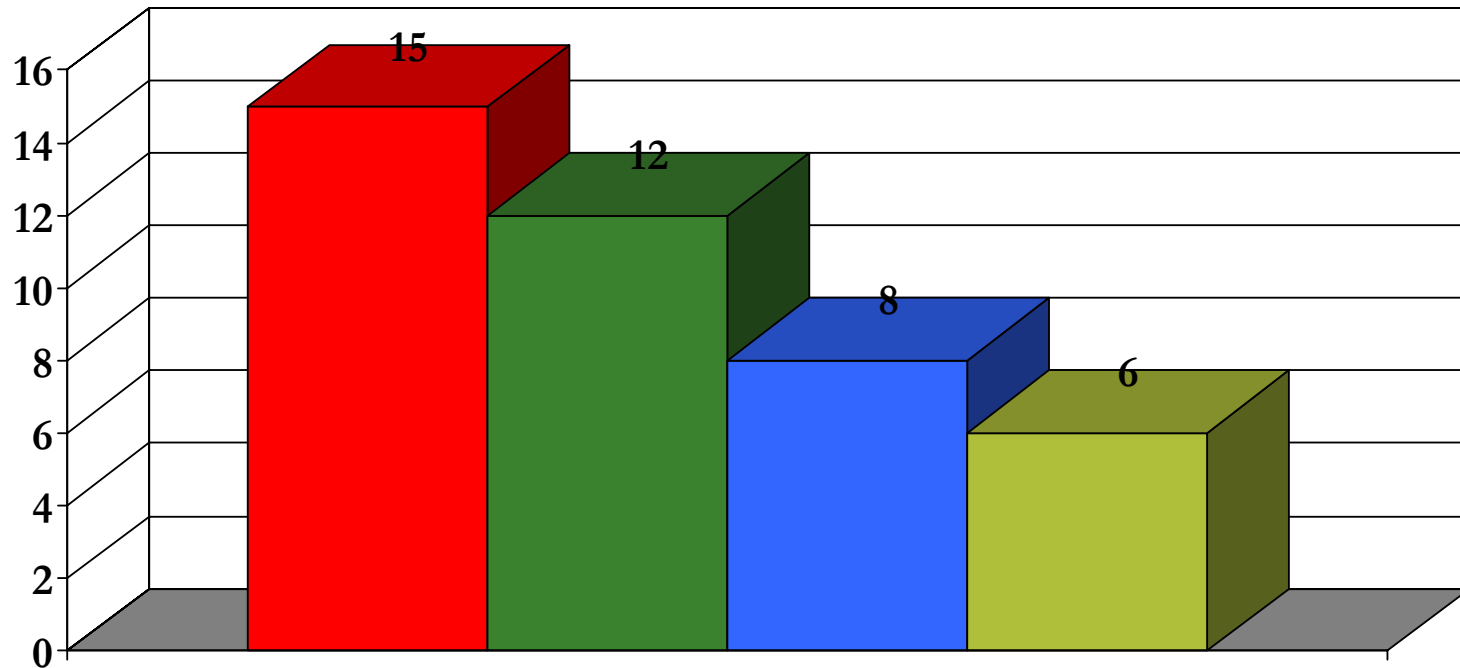
N = 18

Sample sizes <30 are not completely reliable

# Baltimore City: 21218

## Top Barriers to Health Care

Frequency Selected



**No Health Insurance**

**Too Expensive**

**No Transportation**

**Local MDs not on My Plan**

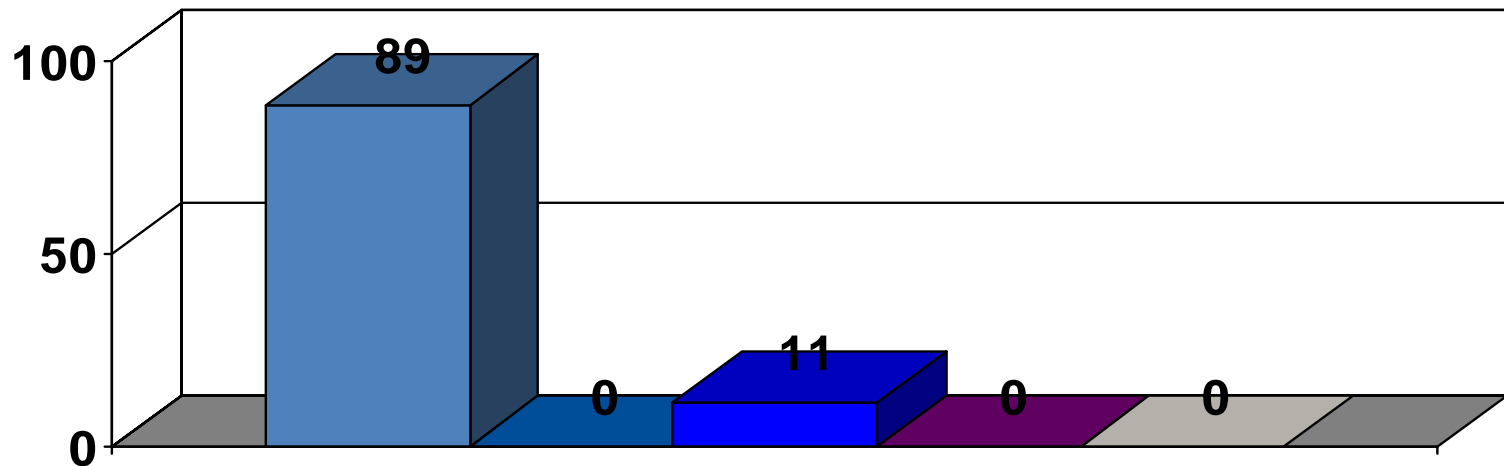
N = 18

Sample sizes <30 are not completely reliable

# Baltimore City: 21223

## Racial Composition

% of Respondents



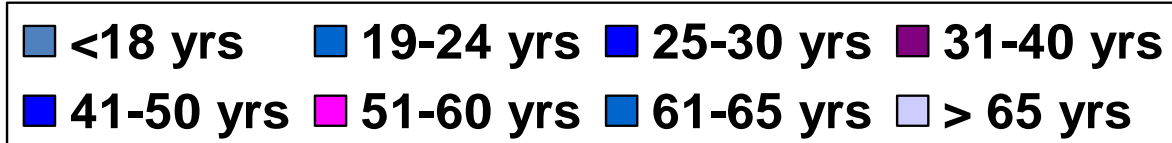
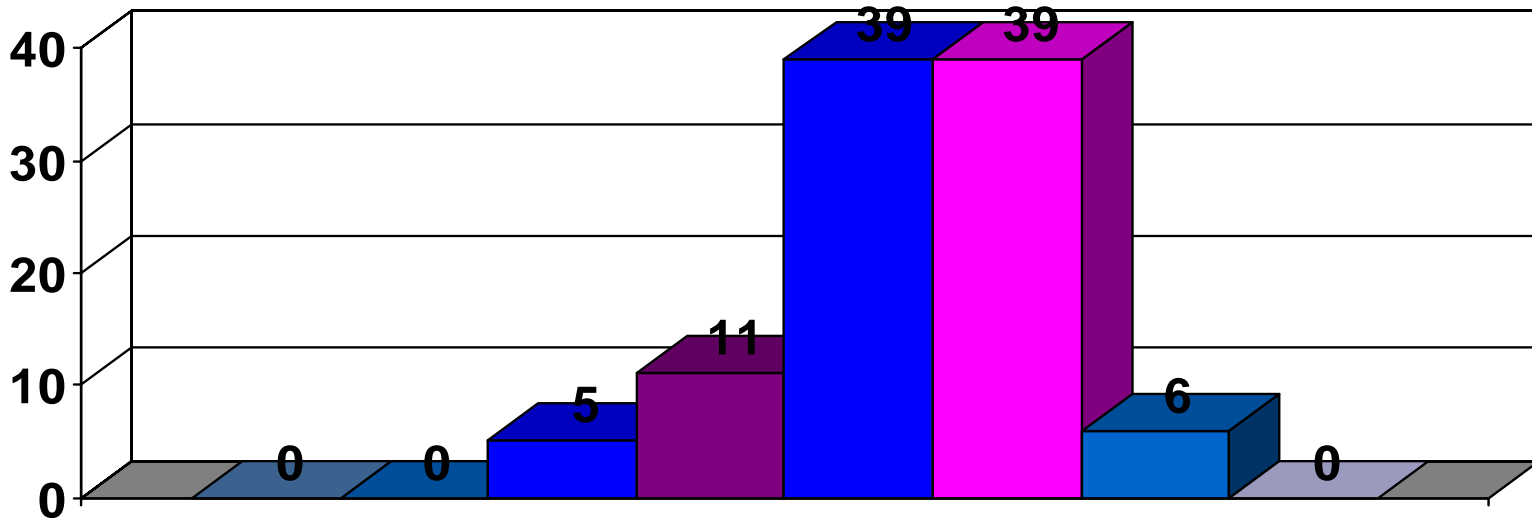
N = 18

Sample sizes <30 are not completely reliable

# Baltimore City: 21223

## Age Group Composition

% of Respondents

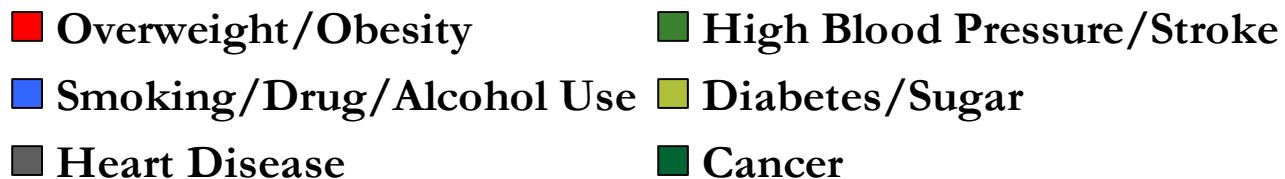
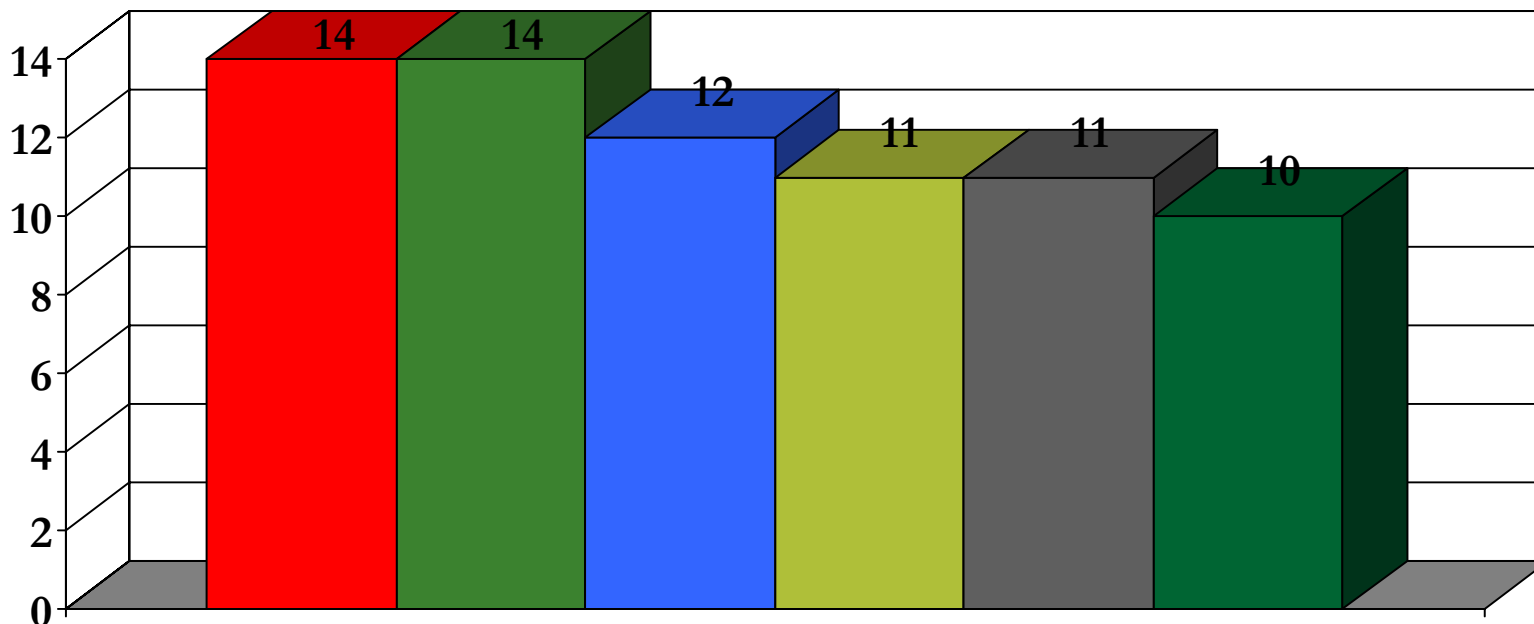


N = 18

Sample sizes <30 are not completely reliable

# Baltimore City: 21223

## Top 6 Health Concerns



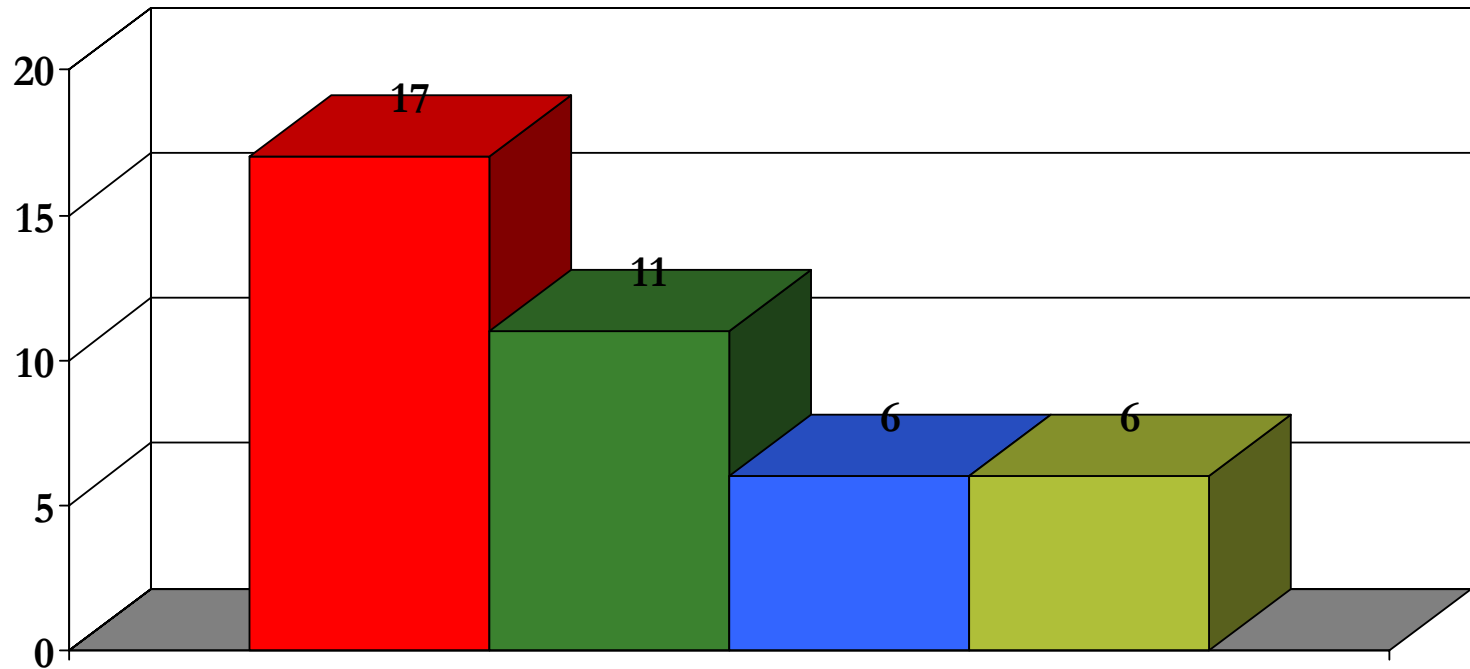
N = 18

Sample sizes <30 are not completely reliable

# Baltimore City: 21223

## Top Barriers to Health Care

Frequency Selected



**No Health Insurance**

**Too Expensive**

**No Transportation**

**Local MDs not on My Plan**

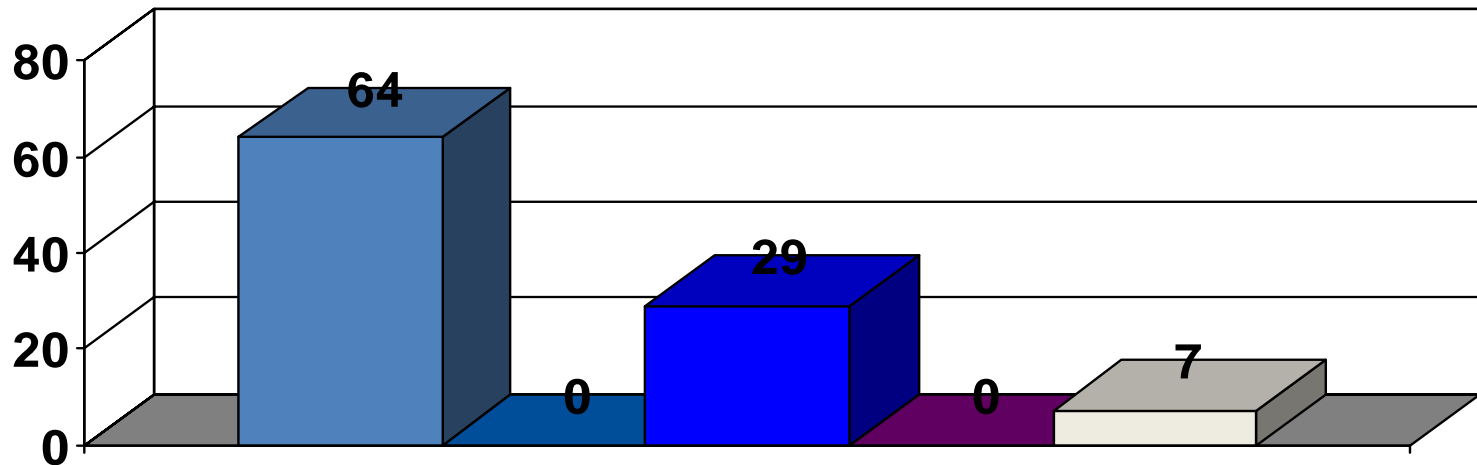
N = 18

Sample sizes <30 are not completely reliable

# Baltimore City: 21225

## Racial Composition

% of Respondents



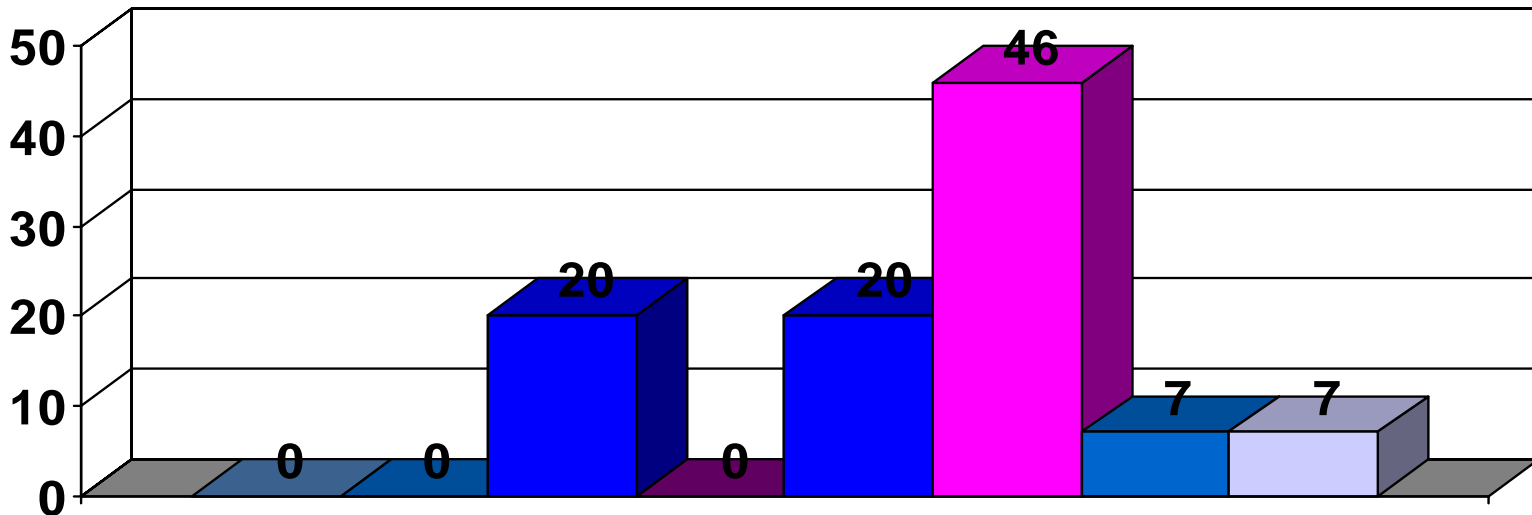
N = 15

Sample sizes <30 are not completely reliable

# Baltimore City: 21225

## Age Group Composition

% of Respondents



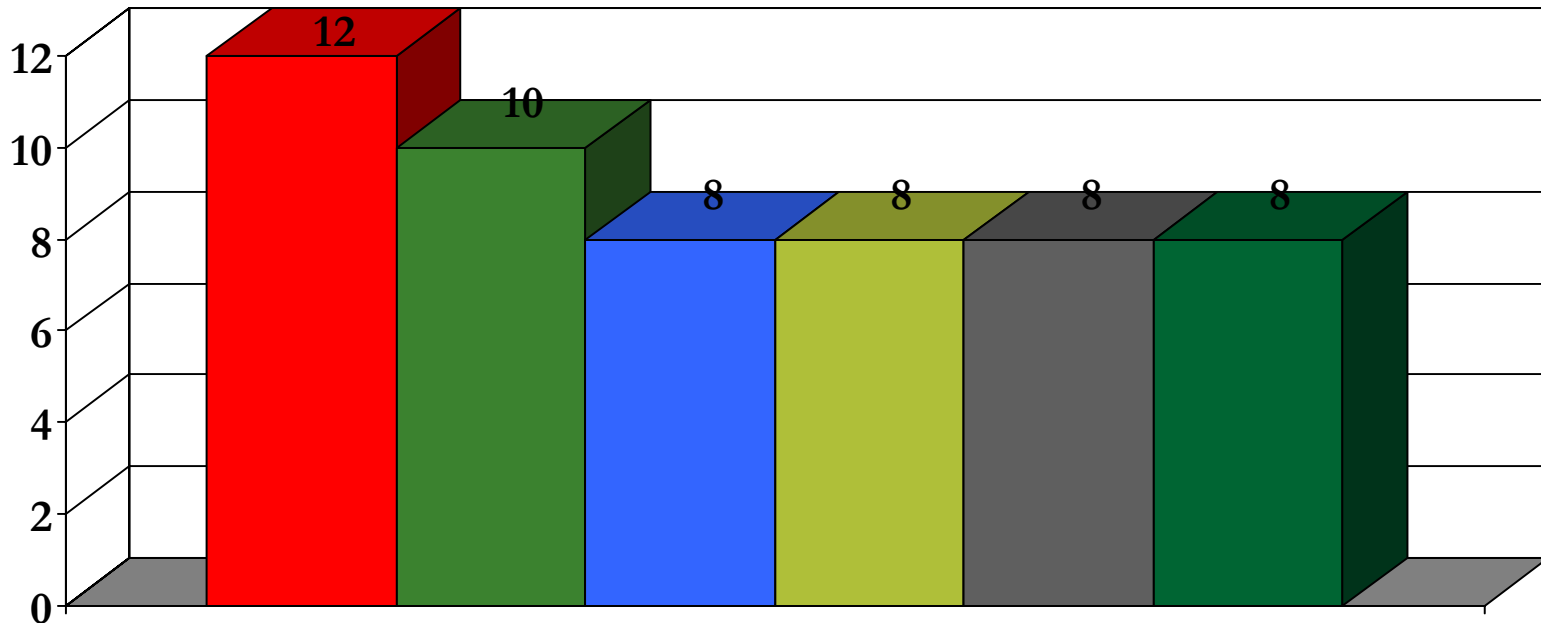
N = 15

Sample sizes <30 are not completely reliable



# Baltimore City: 21225

## Top 6 Health Concerns



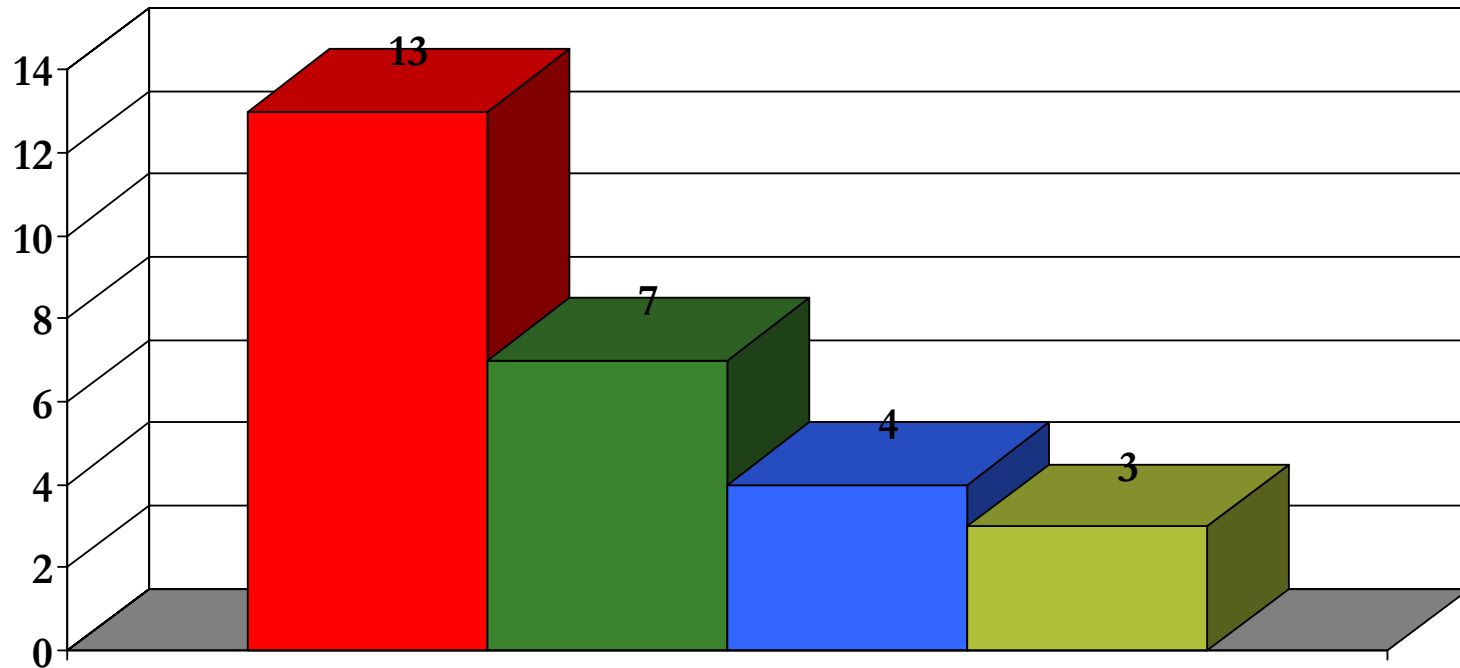
N = 15

Sample sizes <30 are not completely reliable

# Baltimore City: 21225

## Top Barriers to Health Care

Frequency Selected



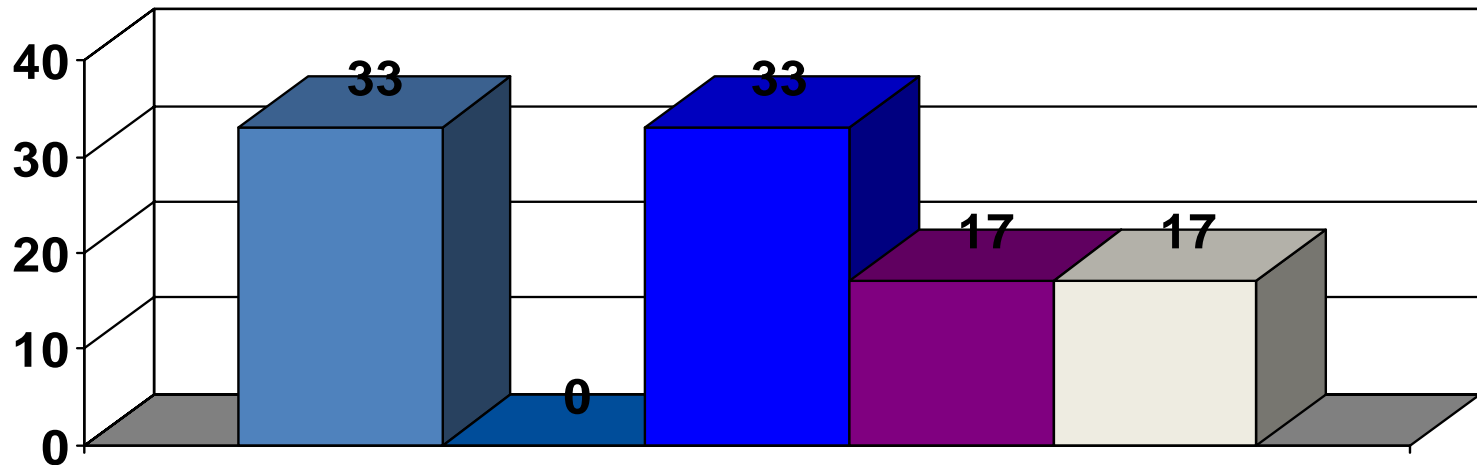
N = 15

Sample sizes <30 are not completely reliable

# Baltimore City: 21227

## Racial Composition

% of Respondents



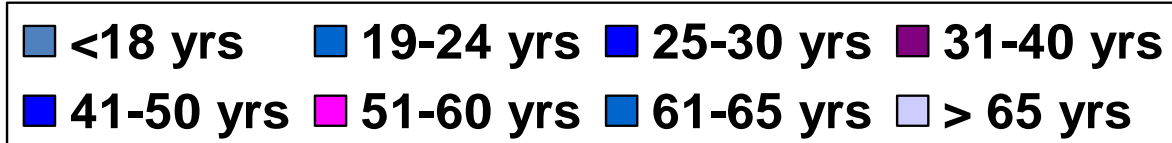
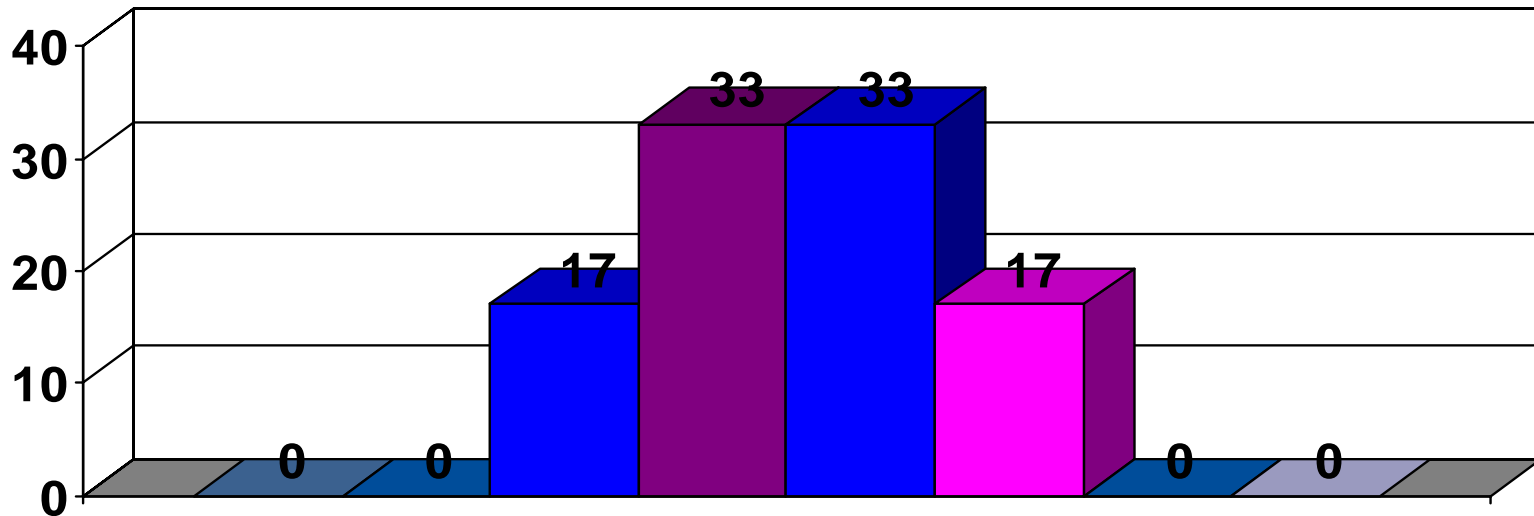
N = 6

Sample sizes <30 are not completely reliable

# Baltimore City: 21227

## Age Group Composition

% of Respondents

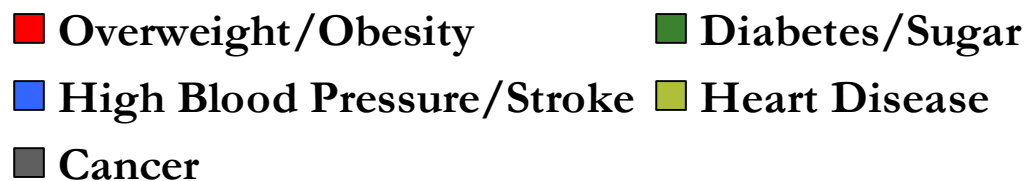
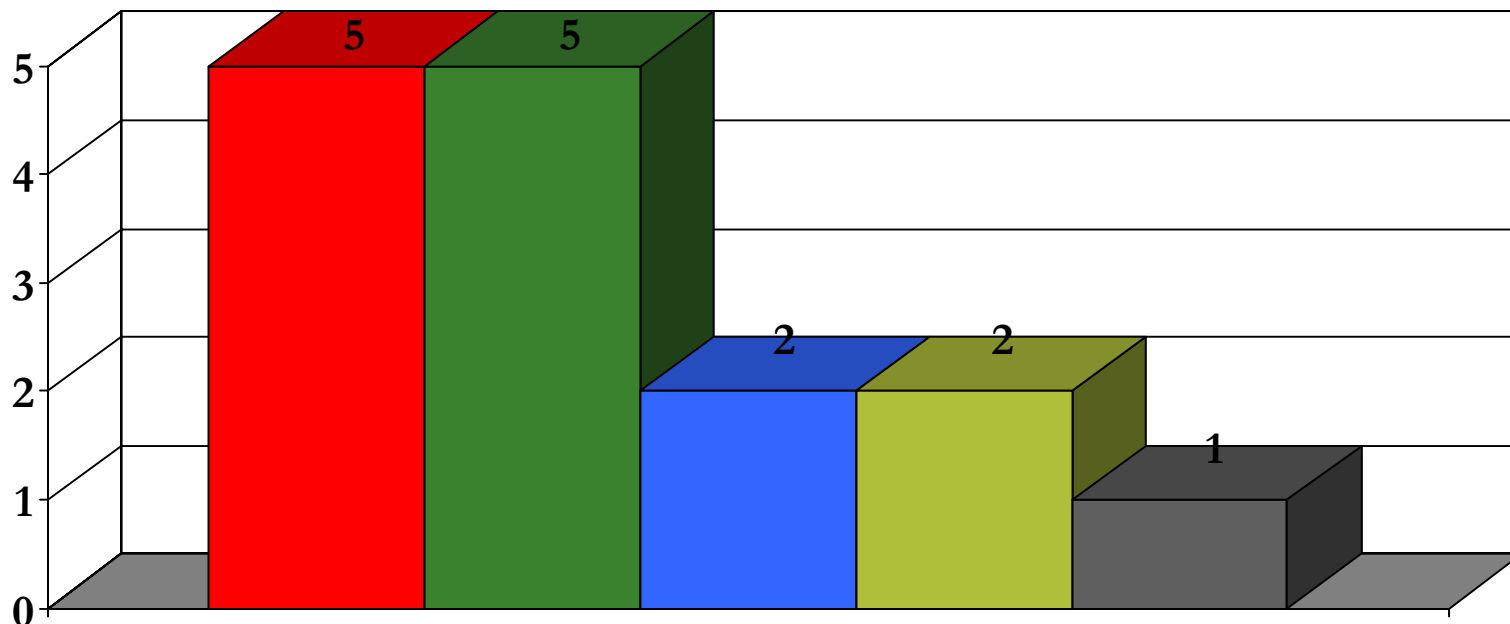


N = 6

Sample sizes <30 are not completely reliable

# Baltimore City: 21227

## Top 6 Health Concerns



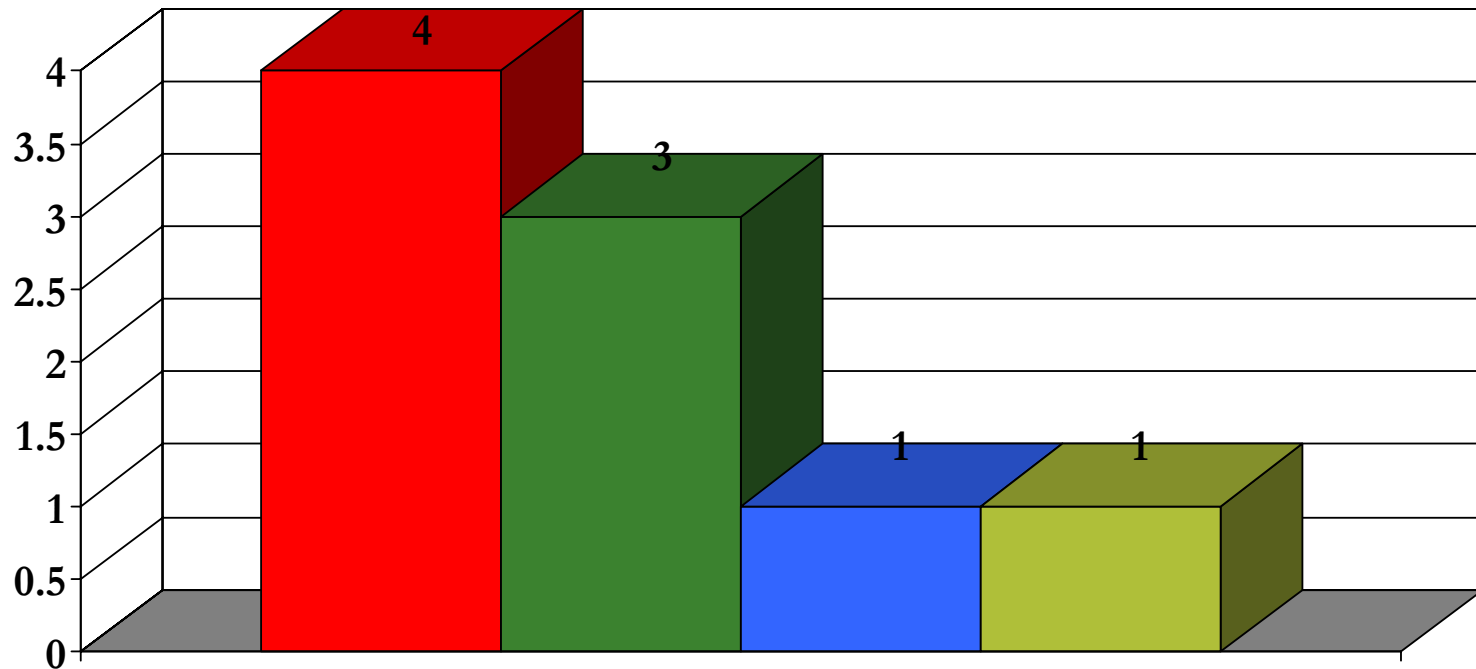
N = 6

Sample sizes <30 are not completely reliable

# Baltimore City: 21227

## Top Barriers to Health Care

Frequency Selected



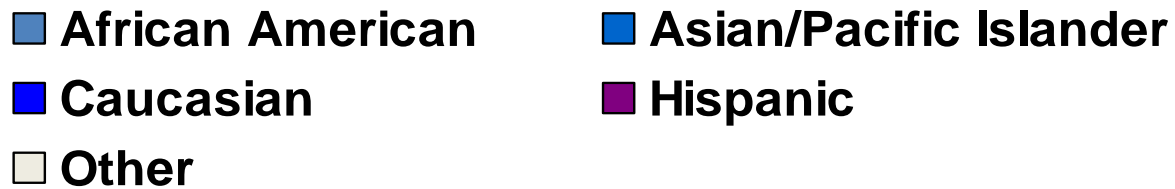
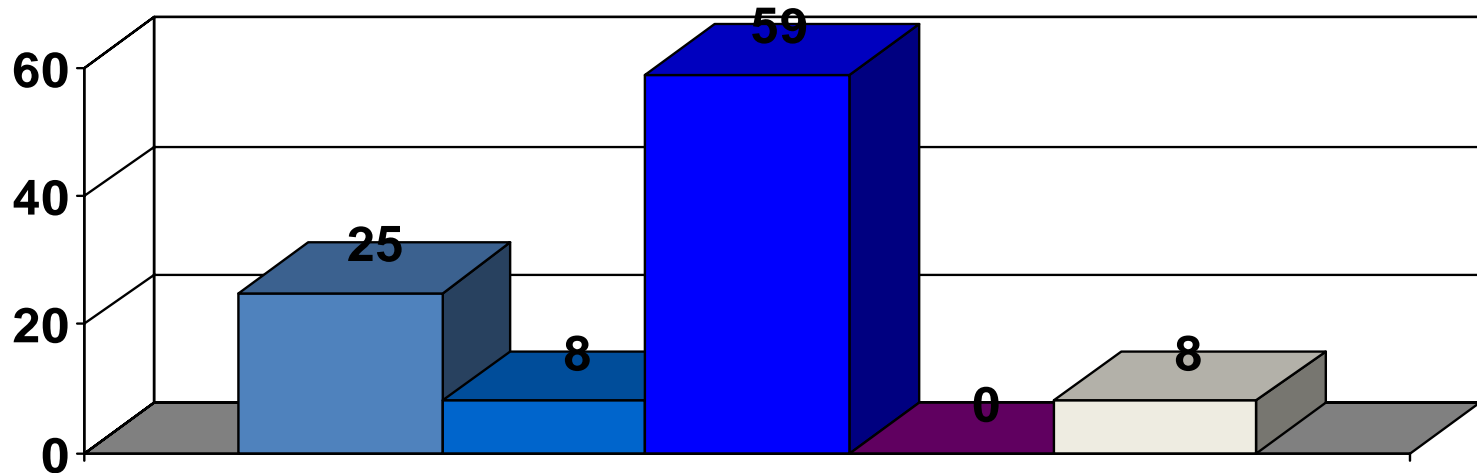
N = 6

Sample sizes <30 are not completely reliable

# Baltimore City: 21228

## Racial Composition

% of Respondents



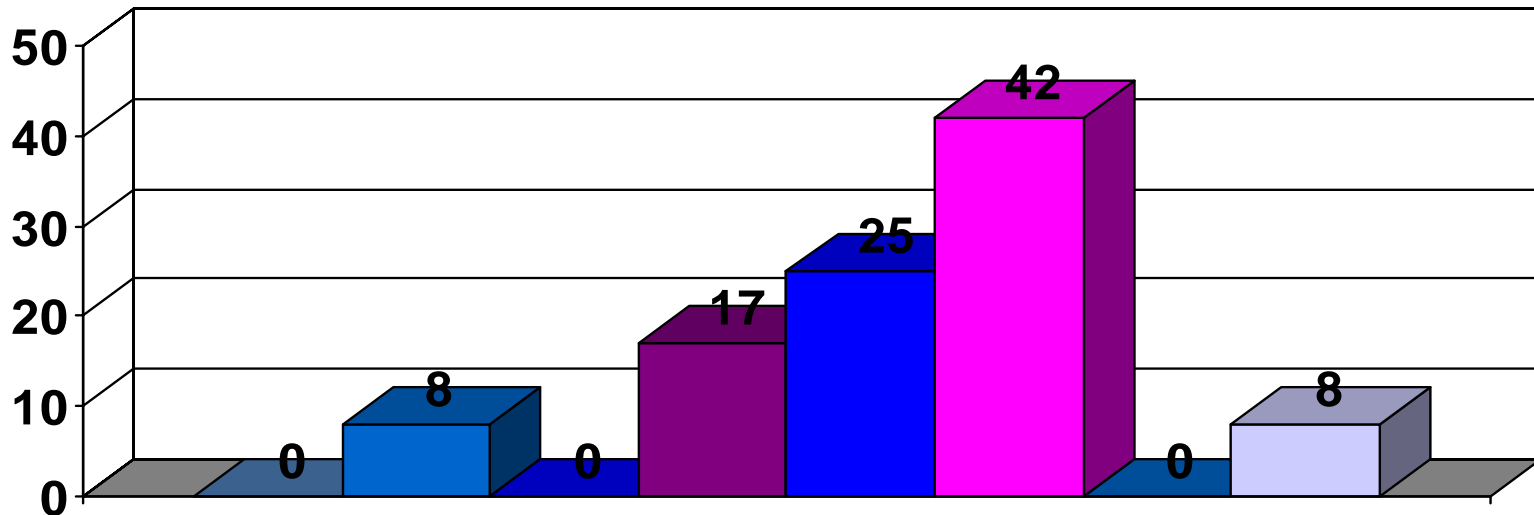
N = 12

Sample sizes <30 are not completely reliable

# Baltimore City: 21228

## Age Group Composition

% of Respondents



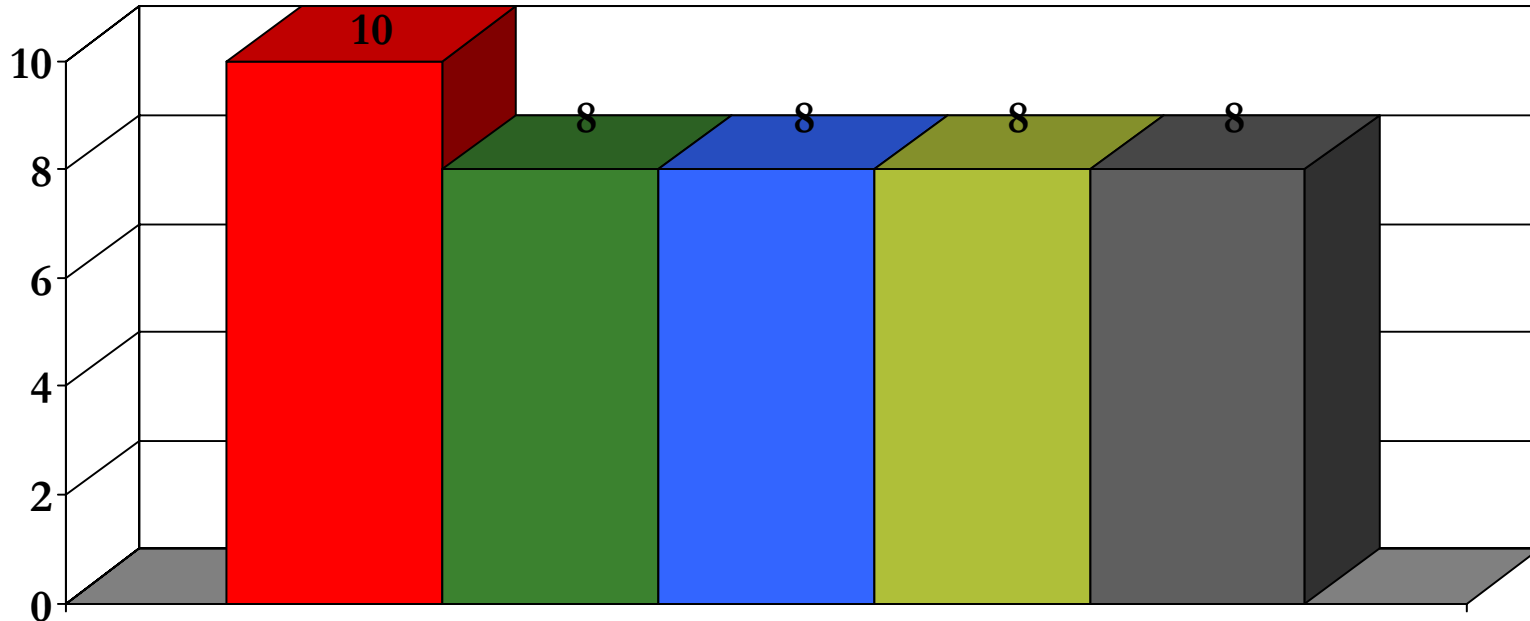
N = 12

Sample sizes <30 are not completely reliable



# Baltimore City: 21228

## Top 5 Health Concerns



- Smoking/Drug/Alcohol Use
- Diabetes/Sugar
- Overweight/Obesity
- Mental Health Issues
- Heart Disease

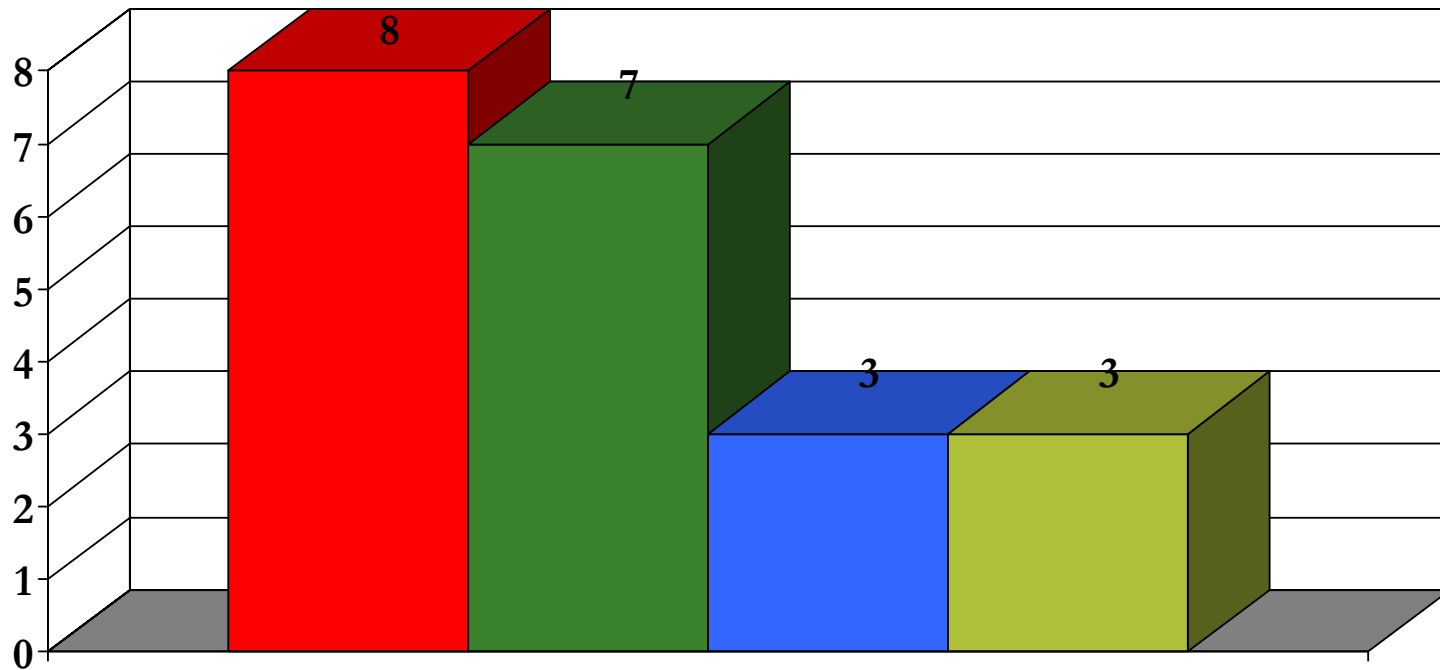
N = 12

Sample sizes <30 are not completely reliable

# Baltimore City: 21228

## Top Barriers to Health Care

Frequency Selected



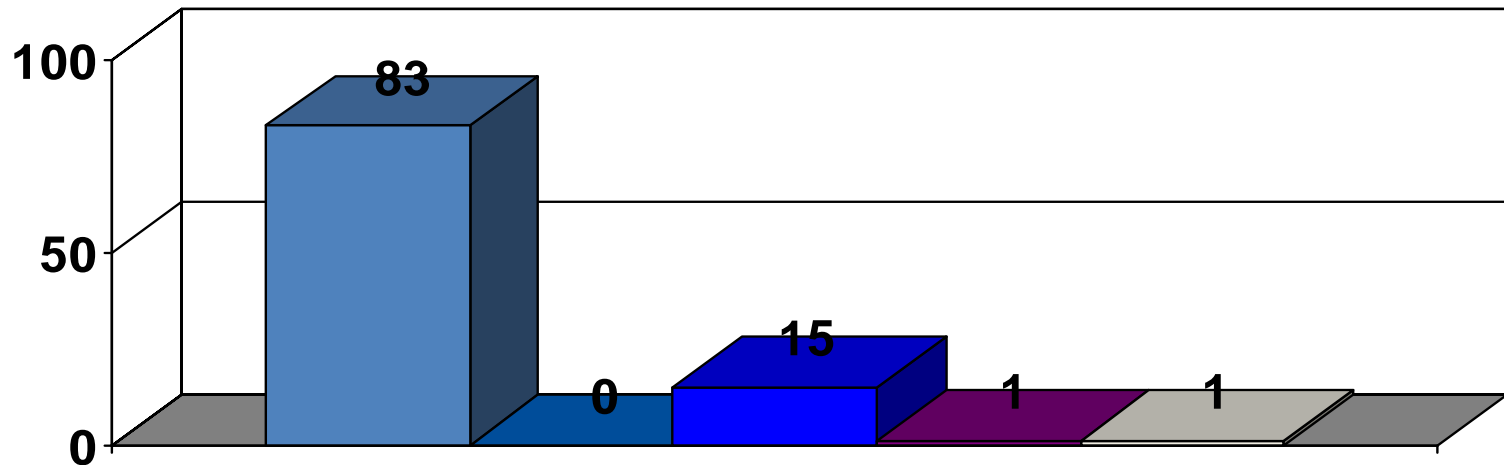
N = 12

Sample sizes <30 are not completely reliable

# Baltimore City: 21229

## Racial Composition

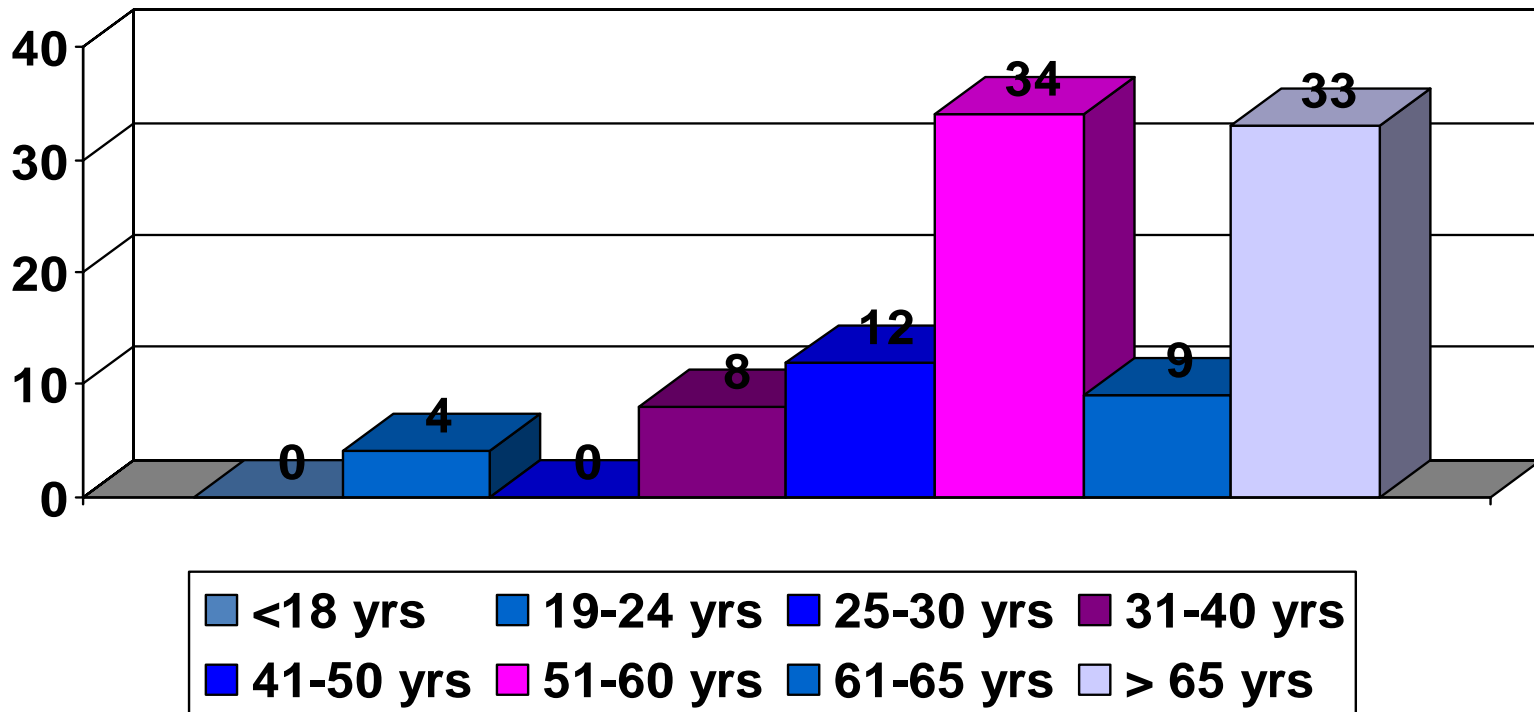
% of Respondents



# Baltimore City: 21229

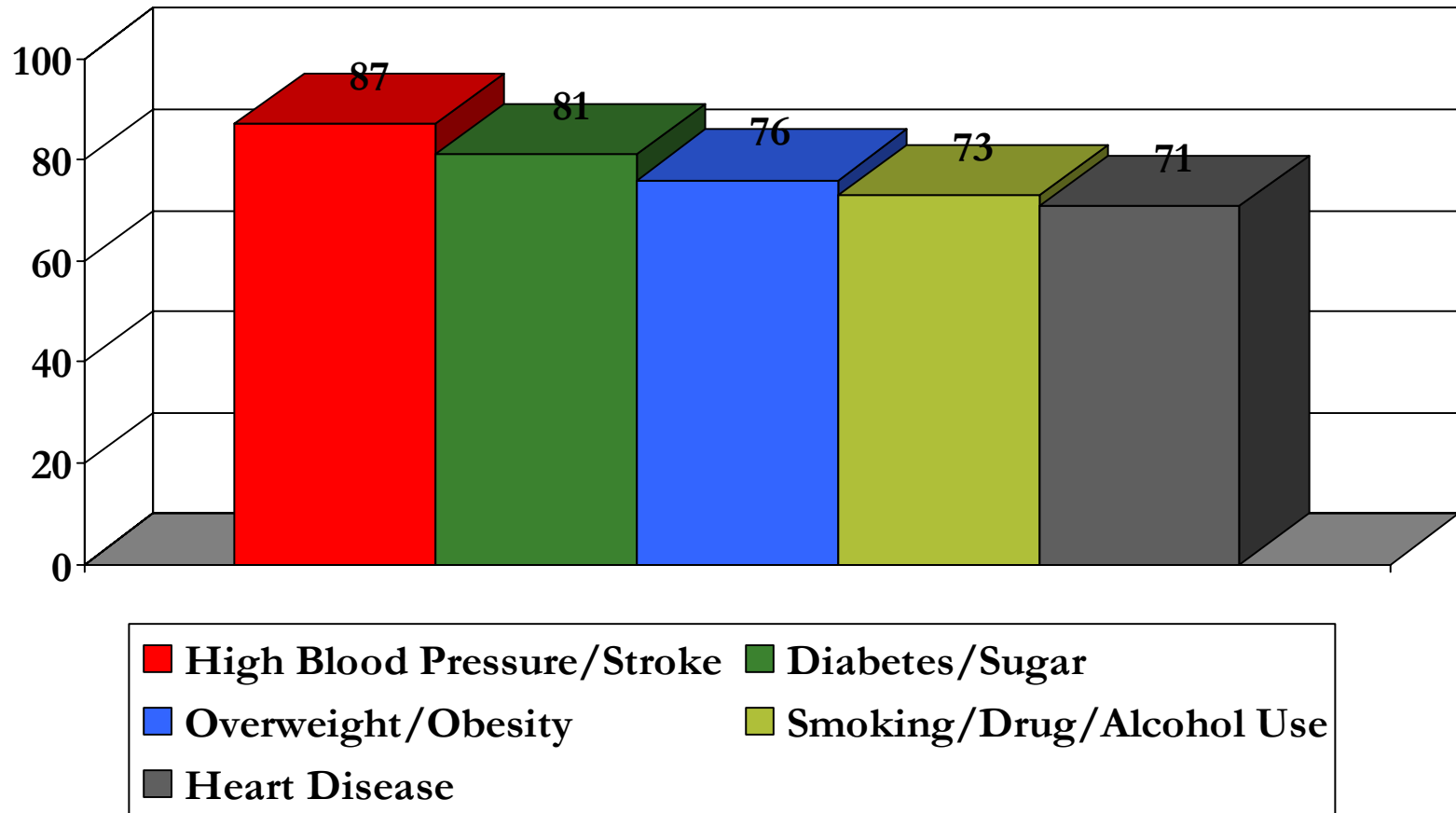
## Age Group Composition

% of Respondents



# Baltimore City: 21229

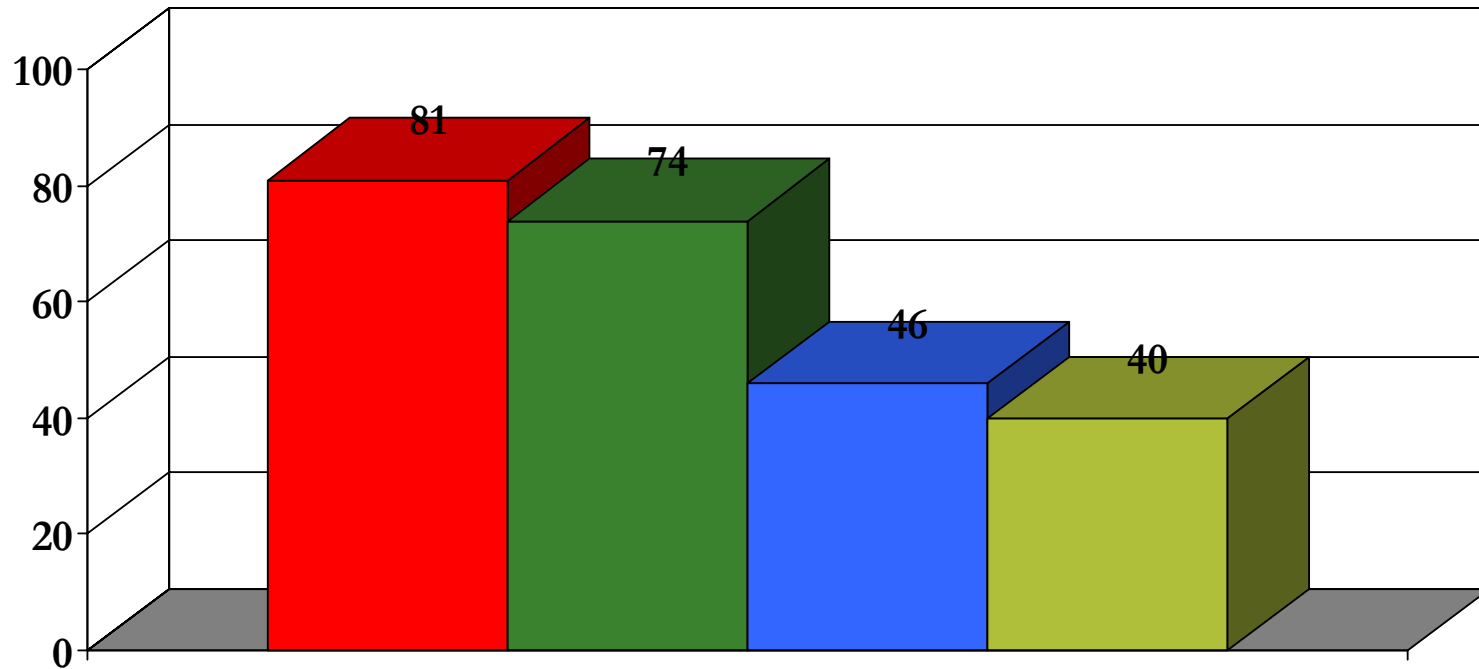
## Top 5 Health Concerns



# Baltimore City: 21229

## Top Barriers to Health Care

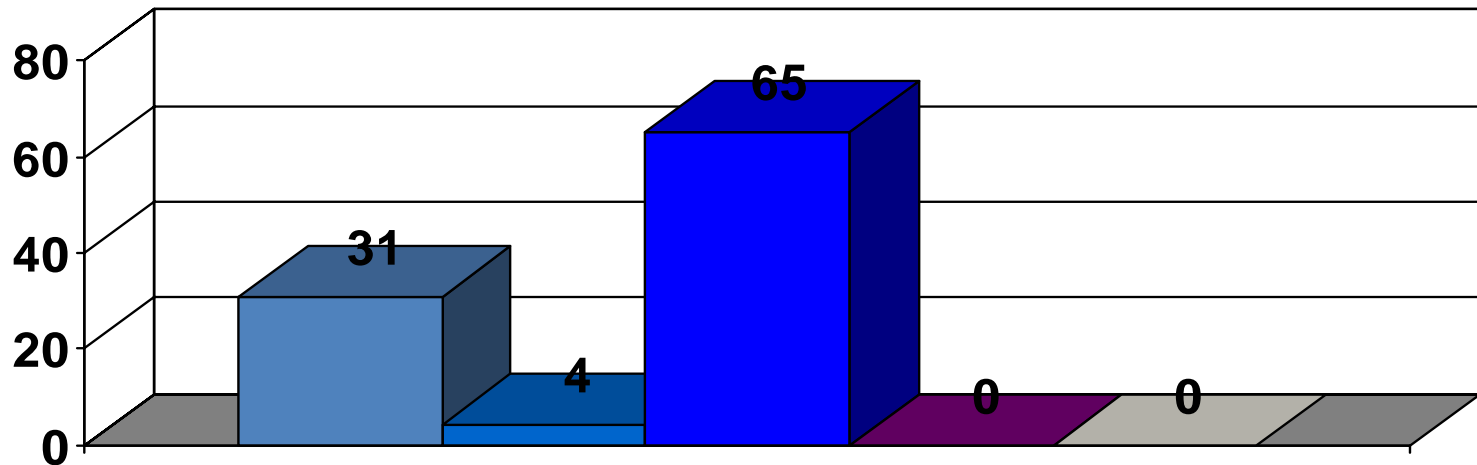
Frequency Selected



# Baltimore City: 21230

## Racial Composition

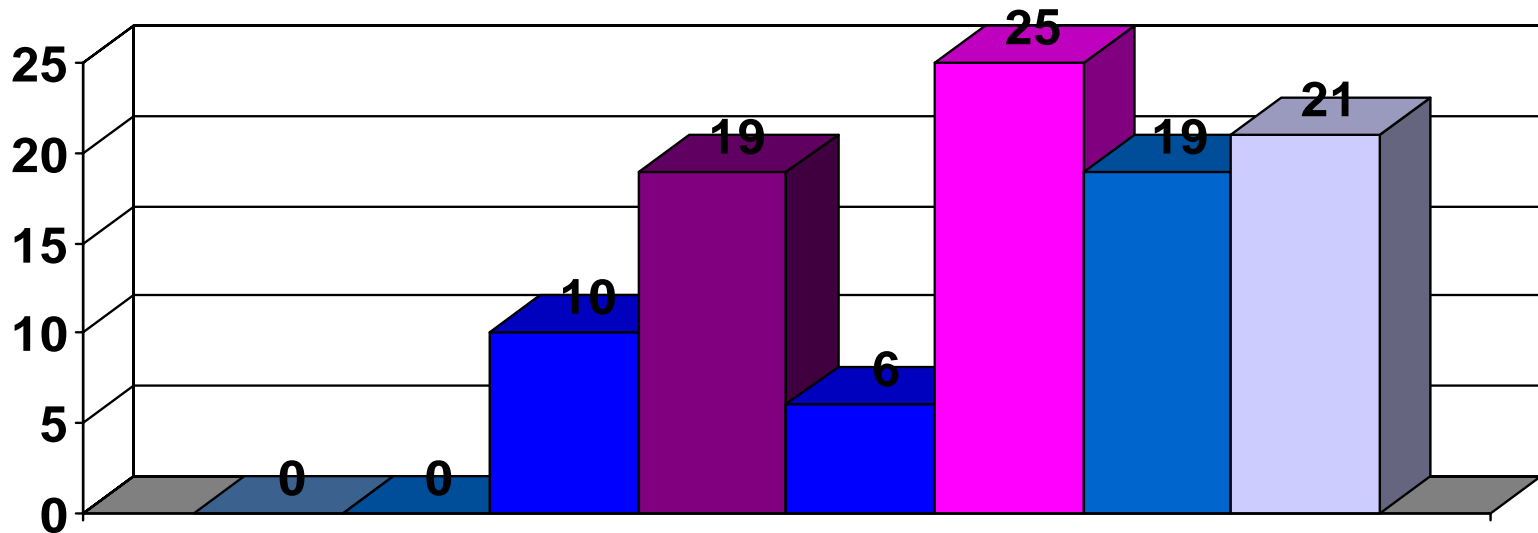
% of Respondents



# Baltimore City: 21230

## Age Group Composition

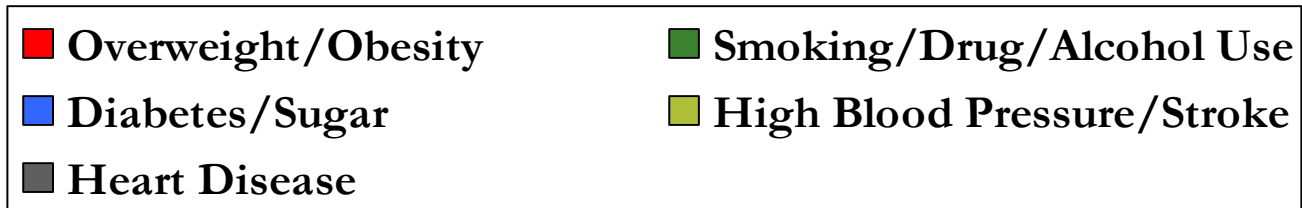
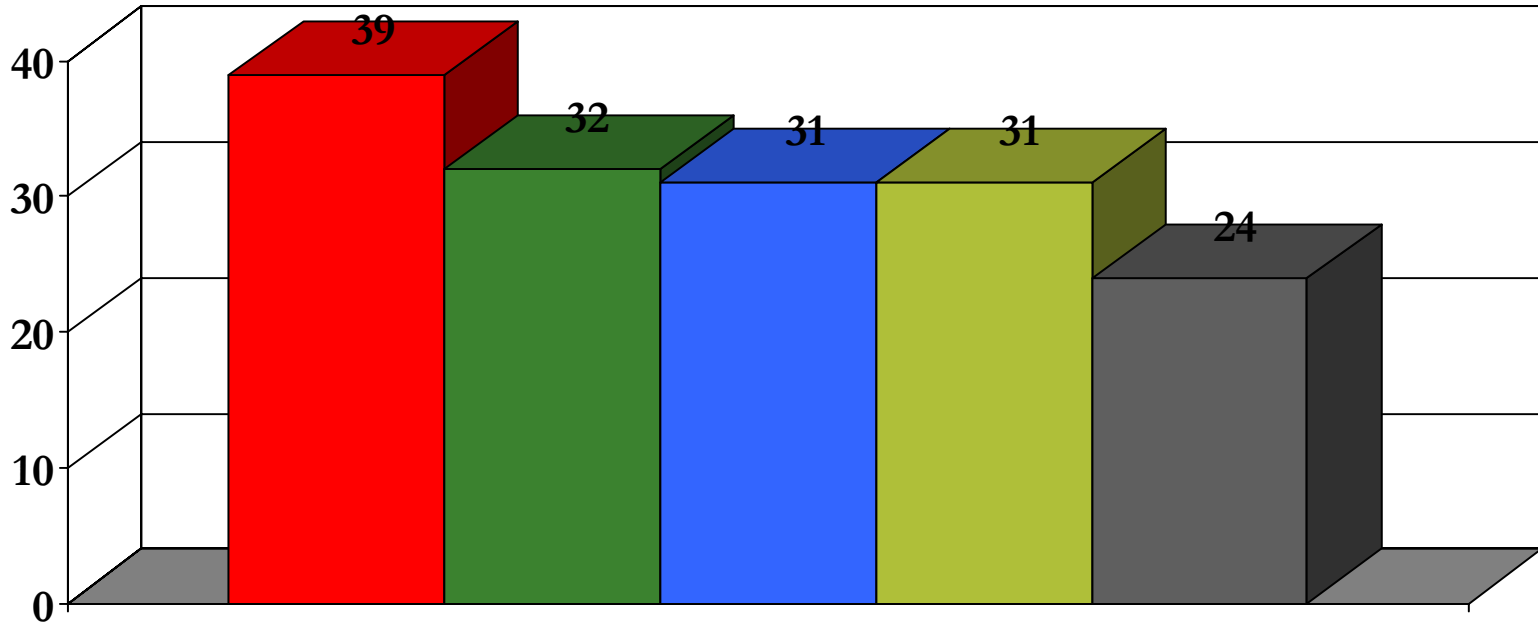
% of Respondents





# Baltimore City: 21230

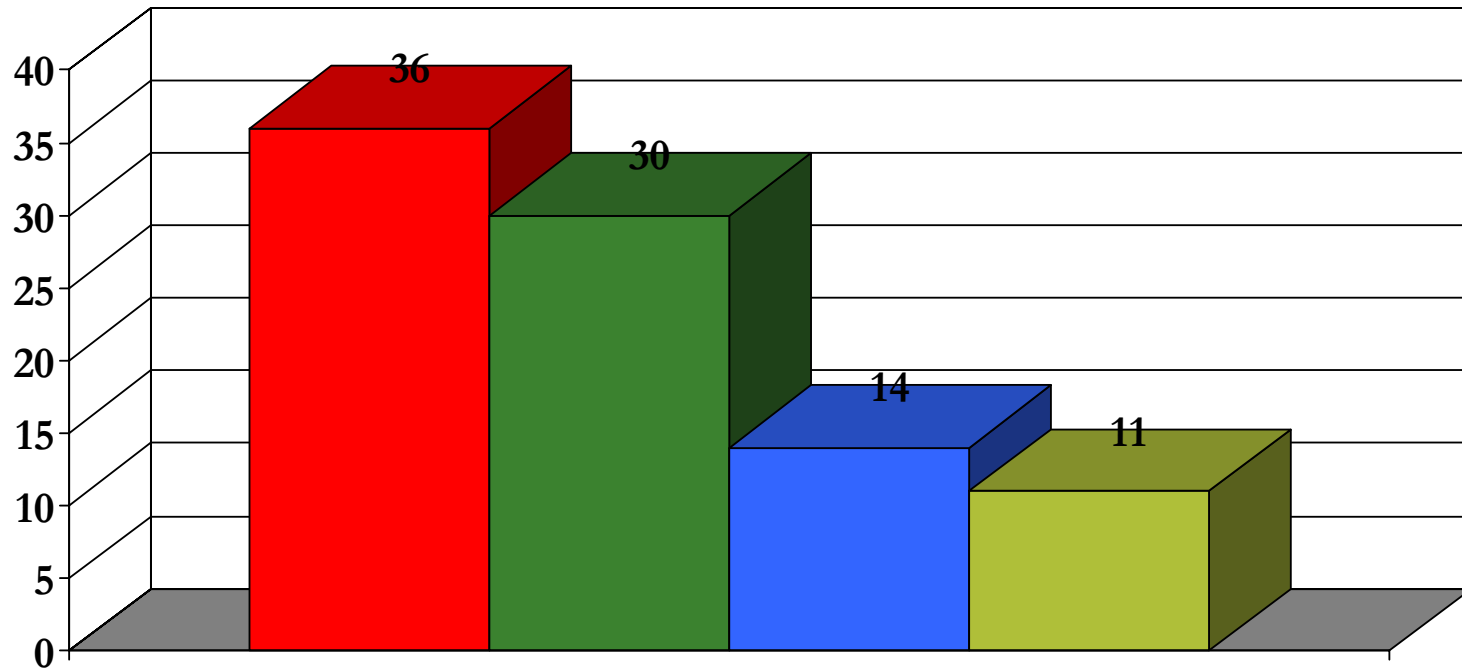
## Top 5 Health Concerns



# Baltimore City: 21230

## Top Barriers to Health Care

Frequency Selected

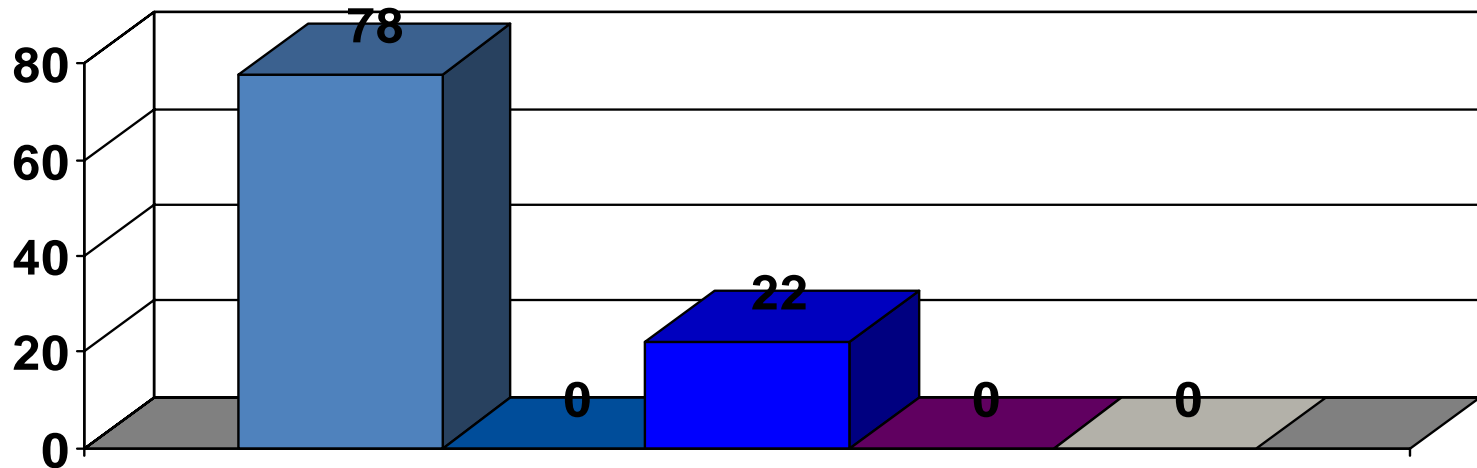


■ Too Expensive/Can't Afford It    ■ No Health Insurance  
■ No Transportation    ■ Local MDs not on my Plan

# Baltimore City: 21234

## Racial Composition

% of Respondents



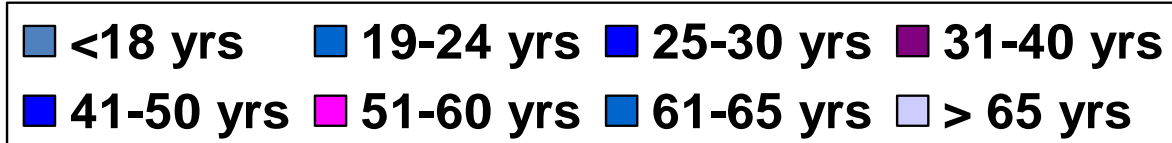
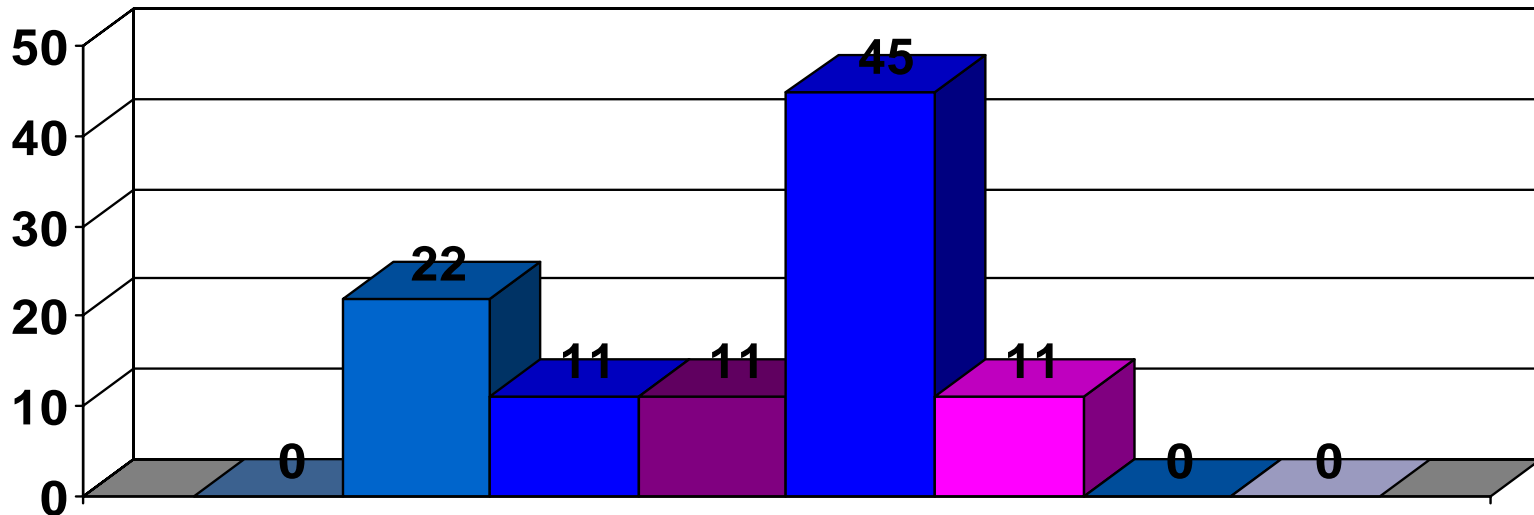
N = 9

Sample sizes <30 are not completely reliable

# Baltimore City: 21234

## Age Group Composition

% of Respondents

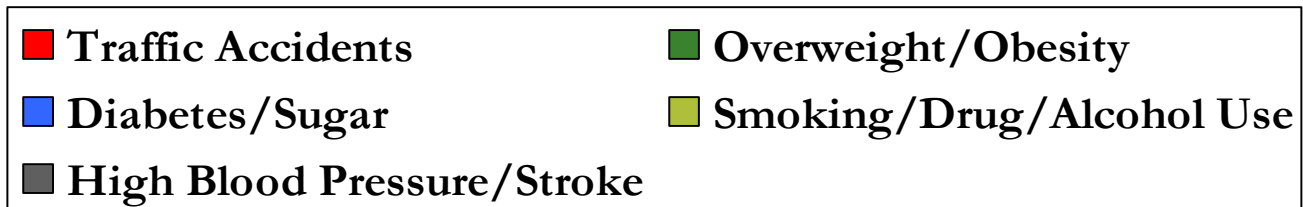
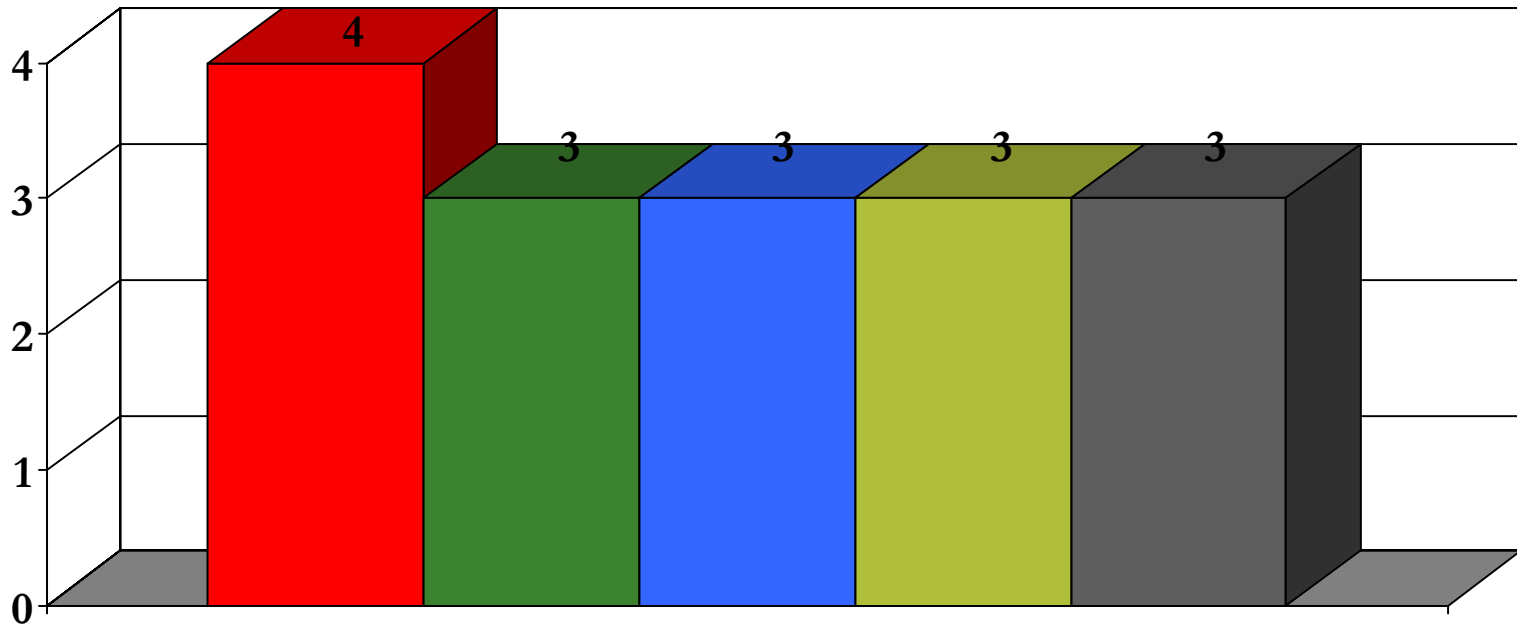


N = 9

Sample sizes <30 are not completely reliable

# Baltimore City: 21234

## Top 5 Health Concerns



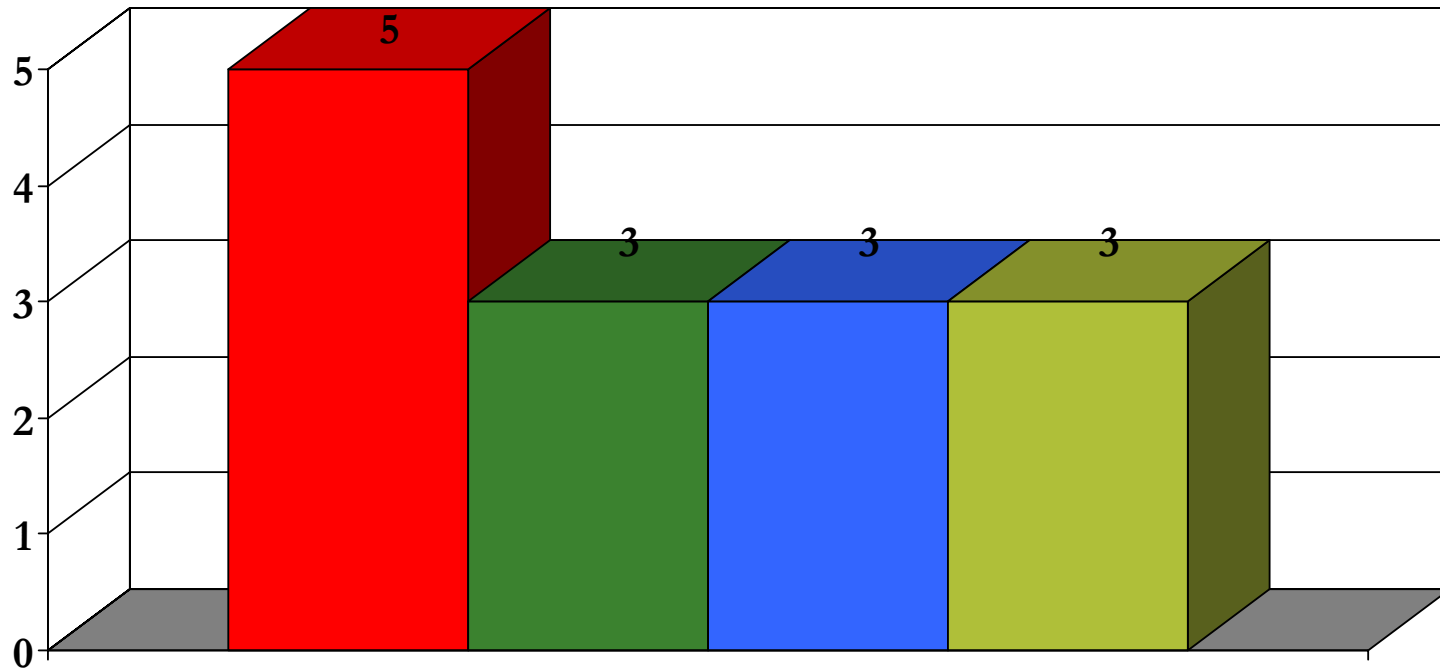
N = 9

Sample sizes <30 are not completely reliable

# Baltimore City: 21234

## Top Barriers to Health Care

Frequency Selected



■ Too Expensive/Can't Afford It   ■ No Health Insurance  
■ No Transportation   ■ Local MDs not on my Plan

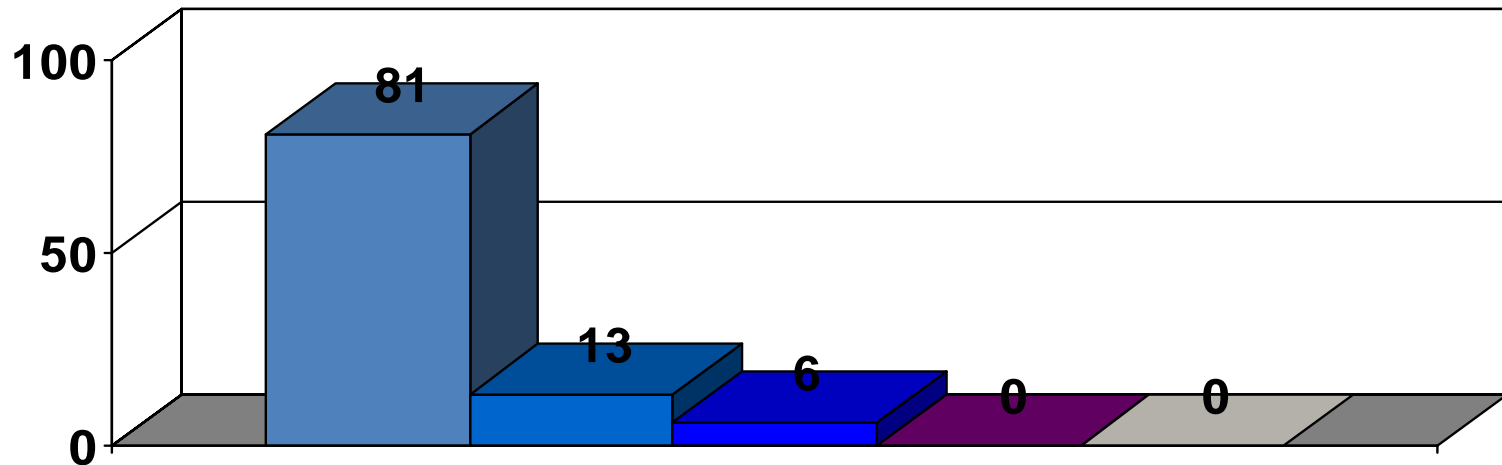
N = 9

Sample sizes <30 are not completely reliable

# Baltimore City: 21244

## Racial Composition

% of Respondents



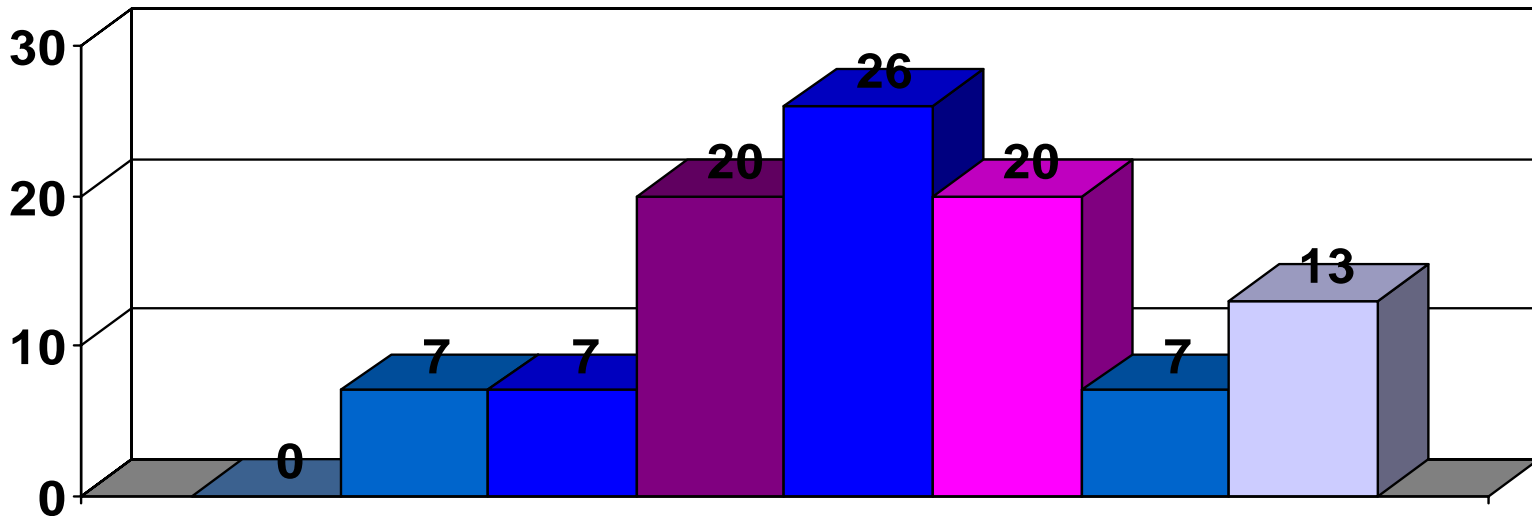
N = 16

Sample sizes <30 are not completely reliable

# Baltimore City: 21244

## Age Group Composition

% of Respondents



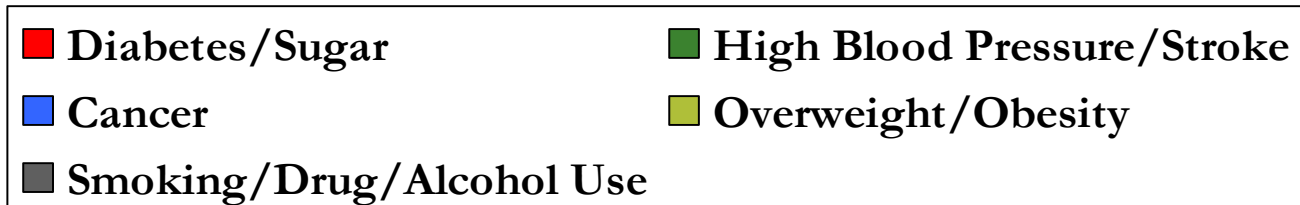
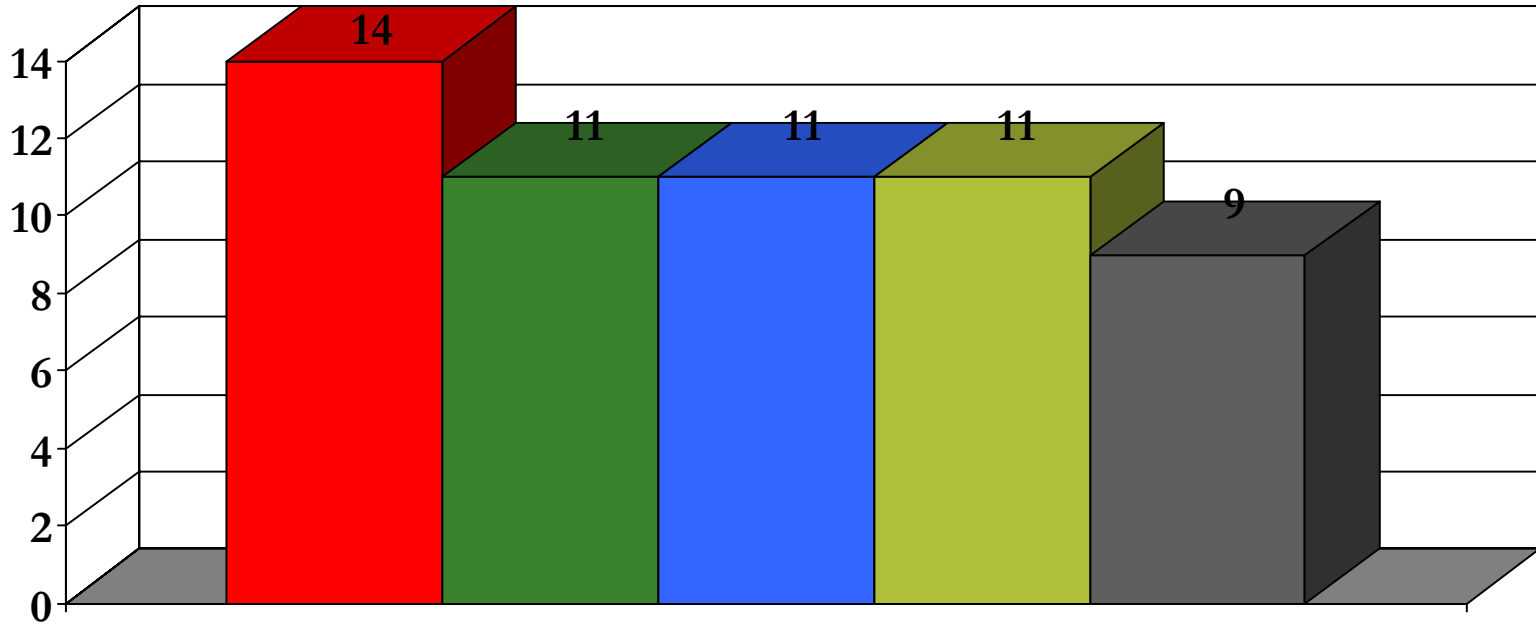
N = 16

Sample sizes <30 are not completely reliable



# Baltimore City: 21244

## Top 5 Health Concerns



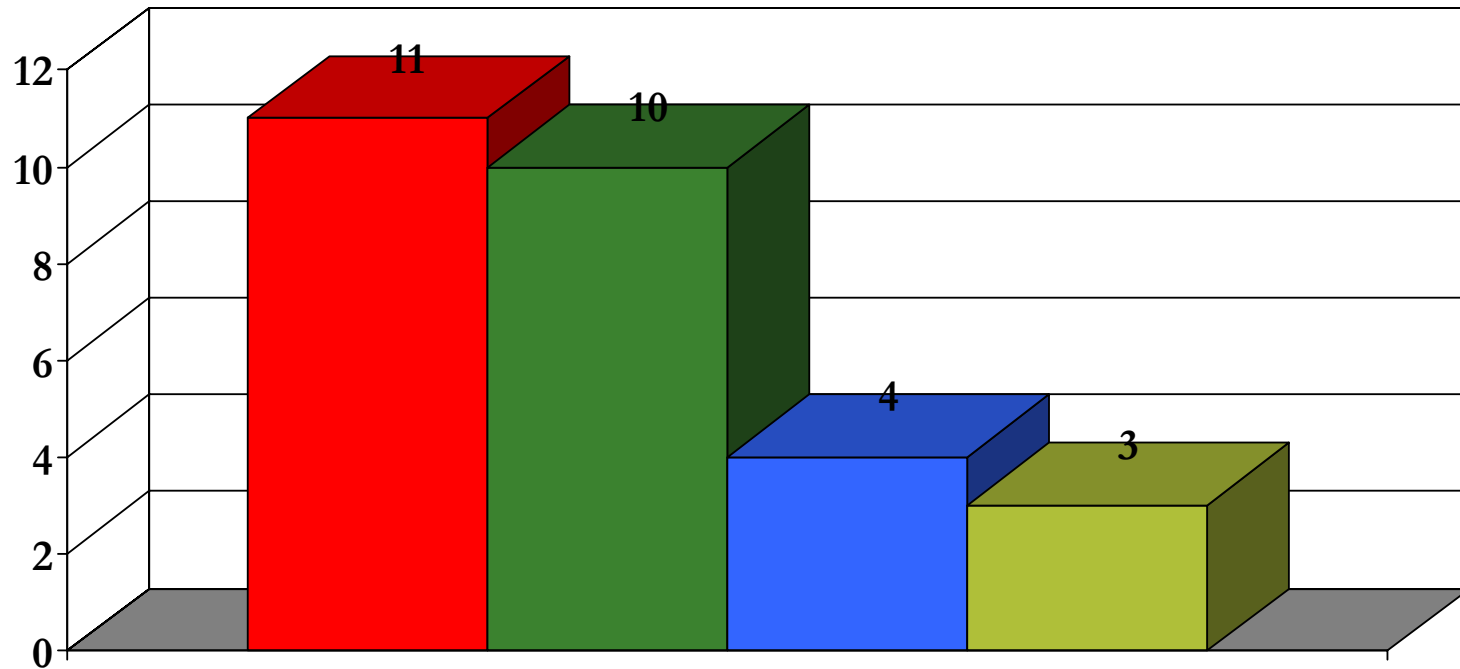
N = 16

Sample sizes <30 are not completely reliable

# Baltimore City: 21244

## Top Barriers to Health Care

Frequency Selected



■ No Health Insurance

■ Too Expensive/Can't Afford It

■ No Transportation

■ Local MDs not on my Plan

N = 16

Sample sizes <30 are not completely reliable