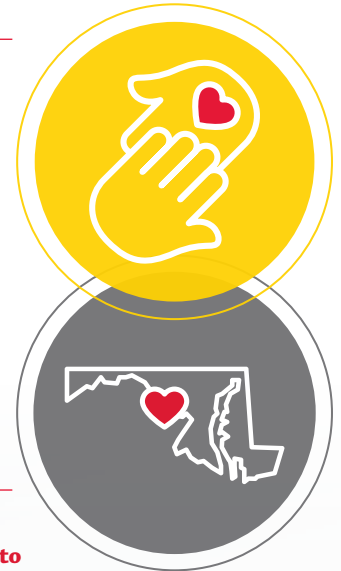


The **University of Maryland Rehabilitation & Orthopaedic Institute** is Maryland's largest and most comprehensive rehabilitation and orthopedic specialty hospital. Our experts provide multi-specialty care to people recovering from stroke and neurological diseases, as well as spinal cord, brain, and other traumatic injuries. At the University of Maryland Rehabilitation & Orthopaedic Institute, we are leaders in research focused on neurological conditions, sports medicine, musculoskeletal diseases, and robotic technologies for improved movement.



Activities

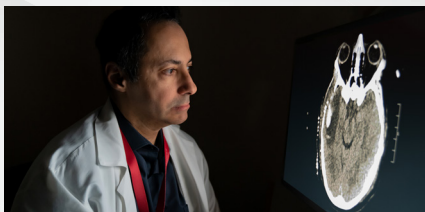
Covid Recovery Rehabilitation Unit

During the first patient surge of the COVID-19 pandemic, UM Rehabilitation & Orthopaedic Institute opened the COVID-19 Recovery Rehabilitation Unit to provide intensive support in an inpatient setting for Marylanders recovering from COVID-19.

The 28-bed unit's specialized, rehabilitative nursing care operated 24 hours a day, alongside a multi-specialty team of specialists including:

- Neurologists
- Psychiatrists
- Respiratory therapists
- Case managers/social workers
- Occupational therapists
- Physical therapists
- Speech-language pathologists

Patients received therapy in a spacious therapy gym equipped with advanced technological equipment in our kitchen and training bathroom for activities of daily living as well as in their hospital room.



Routine to Complex Dental Care for the Whole Family

Our team of experienced dentists works in a hospital setting where special needs patients receive the dental care they need in the safest, most comfortable environment possible. Our dentists use the latest technology to provide preventive, diagnostic, restorative, prosthetic services so patients can access the full spectrum of dental care, all in one place. Our dedicated pediatric and general dentists specialize in treating patients of all ages from across the state, including those with special needs. With a full renovation, our dentists can now provide advanced treatments so that everyone can get the care they require.

Wheelchair Basketball Clinic

The University of Maryland Rehabilitation & Orthopaedic Institute's Adapted Sports Program partnered with Baltimore City Recreation and Parks Therapeutic Recreation Division to offer a free wheelchair basketball clinic. Our eight-week instructional clinic taught the basics of wheelchair basketball to beginners and intermediate-level, skilled players. The clinic included instructional sessions and scrimmages led by an experienced wheelchair basketball player, with sports chairs provided by University of Maryland Rehabilitation & Orthopaedic Institute.

Living Well Workshop

In order to provide the best possible care to our patients and members of our community, we look beyond discharge, at the way our patients live every day. Through the Living Well Workshop, our free six-week course, we built an accessible action plan to help our patients and members of the community improve daily life. We taught attendees, many of whom suffer from a range of chronic conditions, how to manage fatigue and pain, decrease frustration, eat healthier, communicate better with their physicians, and ultimately regain control over their lives.



Community Health Needs Assessment (CHNA)

To effectively achieve our community health mission, University of Maryland Rehabilitation & Orthopedic Institute conducted a formal community health needs assessment (CHNA) during FY 2019. For purposes of community benefits programming and this report, the Community Benefit Service Area (CBSA) of University of Maryland Rehabilitation & Orthopaedic Institute is a diverse community geographically. As the largest provider of acute spinal cord injury rehabilitation in Maryland as well as traumatic brain injury, the majority of the community outreach

strategic priorities and initiatives focus on serving the needs of the disabled adult community over four large areas of Baltimore City, Baltimore County, Howard County, and Anne Arundel County, Maryland.

The comprehensive assessment of the needs of the community was conducted utilizing the Association for Community Health Improvement's (ACHI) Six-step Community Health Assessment Process as an organizing methodology. The University of Maryland Rehabilitation & Orthopaedic Institute Leadership Team conducted the

Community Health Needs Assessment (CHNA) with input from other University of Maryland Medical Center community leaders, the public, community partners, health experts, and many former patients and families.



CHNA Implementation Plan (IP)

The top priorities represent the intersection of documented unmet community health needs and the hospital's key strengths and mission. These priorities were determined after analyzing all of the data collected from the community health needs assessment. Health literacy is a priority throughout all UMMS hospitals and will be adapted to meet the unique literacy issues facing the respective communities served by UMMS hospitals. In addition to the shared priority

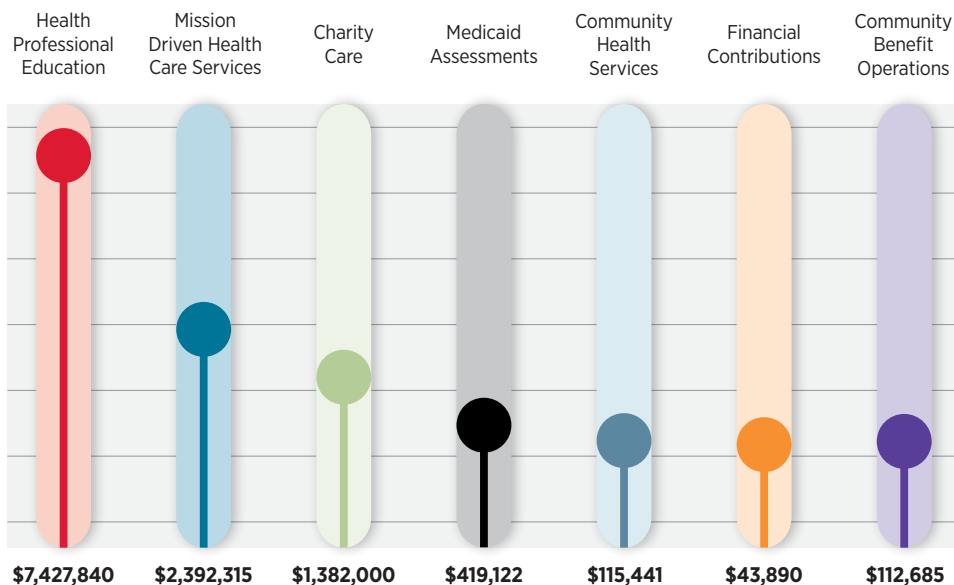
of health literacy, University of Maryland Rehabilitation & Orthopaedic Institute identified strategic community priorities which will drive community outreach programming and partnerships over the next three years.

Strategic Community Priorities:

- Quality of Life
- Transition to the Community
- Community Awareness

In accordance with the federal requirements outlined in the Patient Protection and Affordable Care Act (ACA), a formal community health needs assessment will be conducted again in fiscal year 2021 and every three years hereafter to identify changing community needs and strategic priorities. To review the Community Health Needs Assessment from FY2018 with Implementation Plans, go to www.umms.org/rehab/community/health-needs-assessment.

Financials



\$11,893,293
TOTAL
COMMUNITY
BENEFIT

